

Anti-ASIC1 antibody



Catalog Number: 175127

Product name

Anti-ASIC1 antibody

Specificity

Human, Mouse, Rat

Antibody description

Rabbit polyclonal antibody to ASIC1

Preparation

This antigen of this antibody was synthetic peptide within human accn2 aa 460-500.

Formulation

Liquid, 1*PBS (pH7.4), 0.2% BSA, 50% Glycerol.
Preservative: 0.05% Sodium Azide.

Storage

Store at +4°C after thawing. Aliquot store at -20°C. Avoid repeated freeze / thaw cycles.

Clonality

Polyclonal

Ig Type

Rabbit IgG

Applications

WB, IHC-P, FC

Dilutions

WB: 1:500-1:2,000

IHC-P: 1:50-1:200

FC: 1:50-1:100

Validations

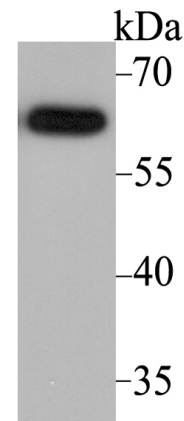


Fig1: Western blot analysis of ACCN2 on SH-SY-5Y cell lysate using anti-ACCN2 antibody at 1/2,000 dilution.

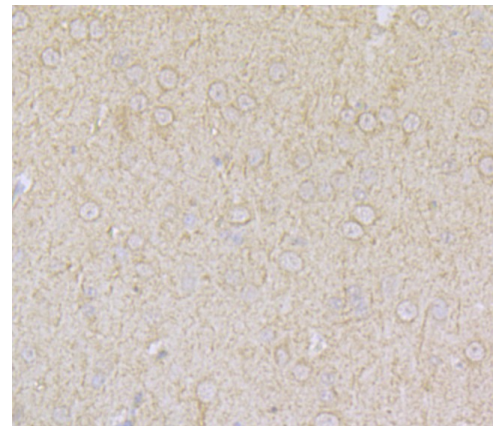


Fig2: Immunohistochemical analysis of paraffin-embedded rat brain tissue using anti-ACCN2 antibody. Counter stained with hematoxylin.

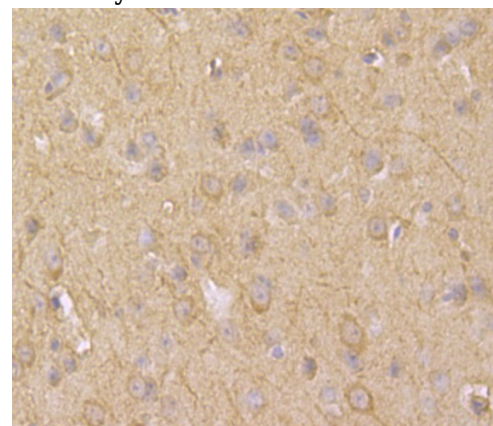


Fig3: Immunohistochemical analysis of paraffin-embedded mouse brain tissue using anti-ACCN2 antibody. Counter stained with hematoxylin.

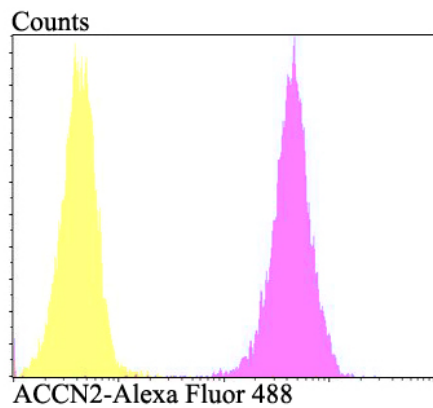


Fig4: Flow cytometric analysis of SH-SY-5Y cells with ACCN2 antibody at 1/100 dilution (fuchsia) compared with an unlabelled control (cells without incubation with primary antibody; yellow). Alexa Fluor 488-conjugated goat anti-rabbit IgG was used as the secondary antibody.