

CNN2 antibody



Catalog Number: 109427

Product name

CNN2 antibody

Immunogen

[Human CNN2 Recombinant protein \(GST tag & His tag\)](#)

Specificity

Human, Mouse, Rat; other species not tested.

Antibody description

CNN2 Rabbit Polyclonal antibody. Positive WB detected in HepG2 cells, HeLa cells. Positive IHC detected in human heart tissue, human hysteryomyoma tissue. Positive IF detected in Hela cells, HepG2 cells. Observed molecular weight by Western-blot: 34-36kd

Preparation

This antibody was obtained by immunization of CNN2 recombinant protein (Accession Number: NM_004368). Purification method: Antigen affinity purified.

Formulation

PBS with 0.02% sodium azide and 50% glycerol pH 7.3.

Storage

Store at -20°C. DO NOT ALIQUOT

Clonality

Polyclonal

Ig Type

Rabbit IgG

Applications

ELISA, WB, IF, IHC

Dilutions

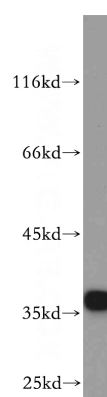
Recommended Dilution:

WB: 1:200-1:2000

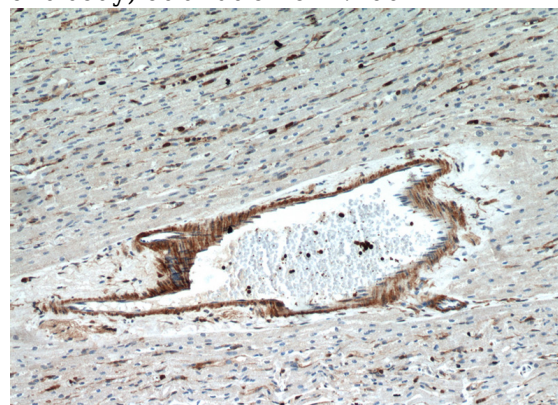
IHC: 1:20-1:200

IF: 1:10-1:100

Validations



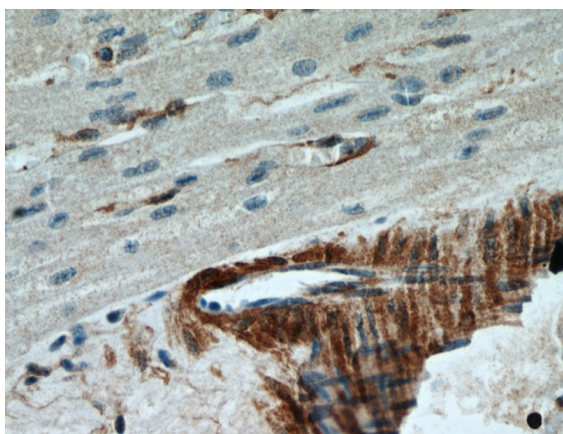
HepG2 cells were subjected to SDS PAGE followed by western blot with Catalog No:109427(CNN2 antibody) at dilution of 1:200



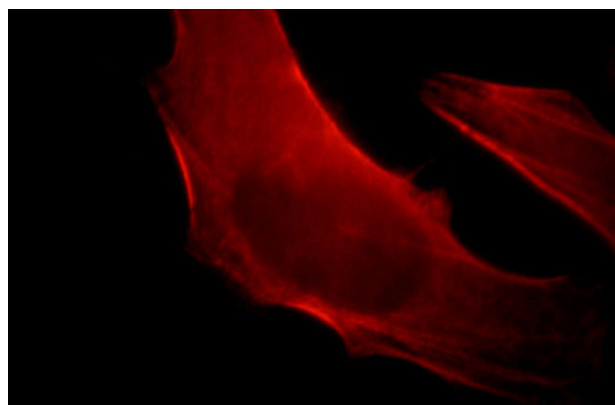
Immunohistochemical of paraffin-embedded human heart using Catalog No:109427(CNN2 antibody) at dilution of 1:50 (under 10x lens)

CNN2 antibody

Catalog Number: 109427



Immunohistochemical of paraffin-embedded human heart using Catalog No:109427(CNN2 antibody) at dilution of 1:50 (under 40x lens)



Immunofluorescent analysis of HepG2 cells, using CNN2 antibody Catalog No:109427 at 1:25 dilution and Rhodamine-labeled goat anti-rabbit IgG (red).