

RBM25 antibody



Catalog Number: 114607

Product name

RBM25 antibody

Immunogen

[Human RBM25 Recombinant protein \(GST tag & His tag\)](#)

Specificity

Human, Mouse; other species not tested.

Antibody description

RBM25 Rabbit Polyclonal antibody. Positive WB detected in Jurkat cells, HEK-293 cells, mouse brain tissue, mouse heart tissue. Positive IHC detected in human breast cancer tissue, human cervical cancer tissue. Observed molecular weight by Western-blot: 110-120 kDa

Preparation

This antibody was obtained by immunization of RBM25 recombinant protein (Accession Number: NM_021239). Purification method: Antigen affinity purified.

Formulation

PBS with 0.1% sodium azide and 50% glycerol pH 7.3.

Storage

Store at -20°C. DO NOT ALIQUOT

Clonality

Polyclonal

Ig Type

Rabbit IgG

Applications

ELISA, WB, IHC

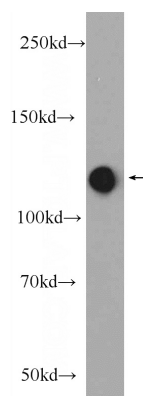
Dilutions

Recommended Dilution:

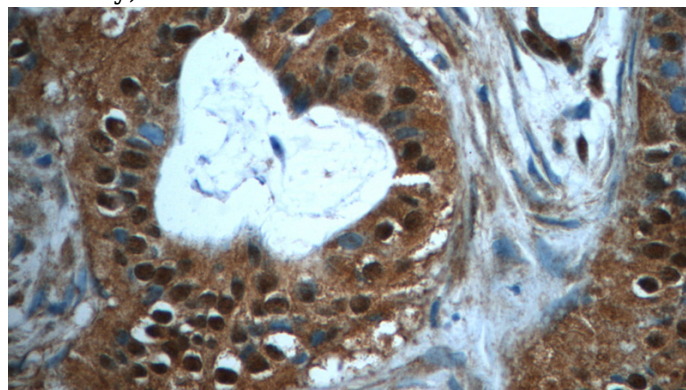
WB: 1:200-1:2000

IHC: 1:20-1:200

Validations



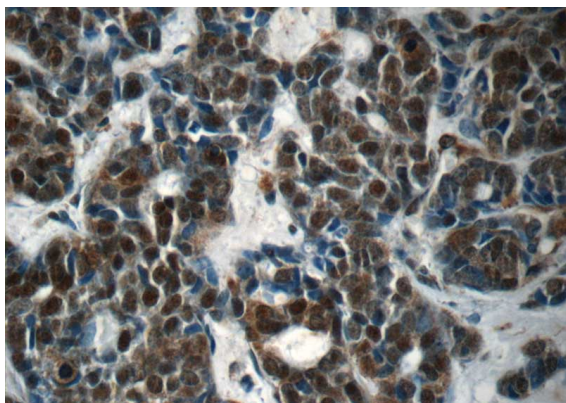
Jurkat cells were subjected to SDS PAGE followed by western blot with Catalog No:114607(RBM25 Antibody) at dilution of 1:600



Immunohistochemistry of paraffin-embedded human breast cancer tissue slide using Catalog No:114607(RBM25 Antibody) at dilution of 1:50 (under 40x lens)

RBM25 antibody

Catalog Number: 114607



Immunohistochemistry of paraffin-embedded human cervical cancer tissue slide using Catalog No:114607(RBM25 Antibody) at dilution of 1:50 (under 40x lens)