

## ZBTB1 antibody

Catalog Number: 116907

**Product name**

IP: 1:200-1:1000

ZBTB1 antibody

IF: 1:50-1:500

## Specificity

Human; other species not tested.

## Antibody description

ZBTB1 Rabbit Polyclonal antibody. Positive IF detected in HeLa cells. Positive WB detected in HeLa cells. Positive IP detected in HeLa cells. Observed molecular weight by Western-blot: 82 kDa

## Preparation

This antibody was obtained by immunization of ZBTB1 recombinant protein (Accession Number: XM\_047431088). Purification method: Antigen affinity purified.

## Formulation

PBS with 0.1% sodium azide and 50% glycerol pH 7.3.

## Storage

Store at -20°C. DO NOT ALIQUOT

## Clonality

## Polyclonal

**Ig Type**

Rabbit IgG

## Applications

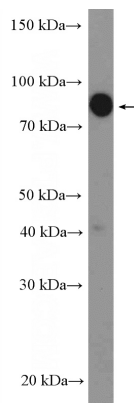
ELISA, WB, IP, IF

## Dilutions

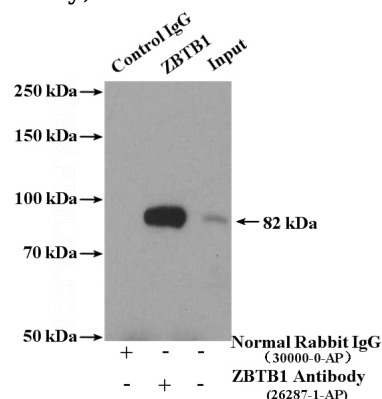
Recommended Dilution:

WB: 1:200-1:1000

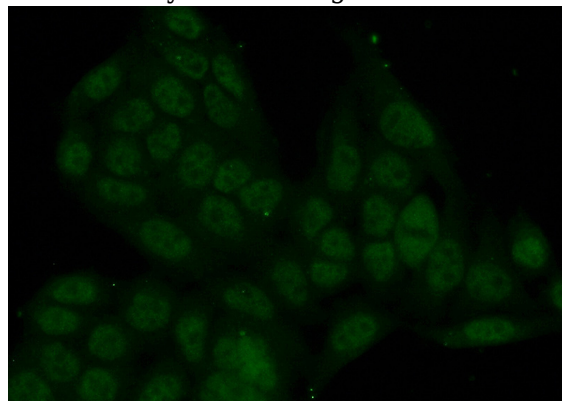
## Validations



HeLa cells were subjected to SDS PAGE followed by western blot with Catalog No:116907(ZBTB1 Antibody) at dilution of 1:300



IP Result of anti-ZBTB1 (IP:Catalog No:116907, 4ug; Detection:Catalog No:116907 1:300) with HeLa cells lysate 4000ug.



Immunofluorescent analysis of (10% Formaldehyde) fixed HeLa cells using Catalog

# ZBTB1 antibody



Catalog Number: 116907

---

No:116907(ZBTB1 Antibody) at dilution of 1:50

and Alexa Fluor 488-conjugated AffiniPure Goat  
Anti-Rabbit IgG(H+L)