

Anti-IL1RL1 antibody



Catalog Number: 103107

Product name

Anti-IL1RL1 antibody

Specificity

Human IL1RL1 / ST2

Antibody description

Rabbit polyclonal to IL1RL1

Preparation

Produced in rabbits immunized with purified, recombinant Human IL1RL1 / ST2 (rh IL1RL1 / ST2; aa 1-328; NP_003847.2). Total IgG was purified by Protein A affinity chromatography.

Formulation

0.2 μ m filtered solution in PBS with 5% trehalose

Storage

This antibody can be stored at 2°C-8°C for one month without detectable loss of activity. Antibody products are stable for twelve months from date of receipt when stored at -20°C to -80°C.

Preservative-Free.

Sodium azide is recommended to avoid contamination (final concentration 0.05%-0.1%). It is toxic to cells and should be disposed of properly. Avoid repeated freeze-thaw cycles.

Clonality

Polyclonal

Ig Type

Rabbit IgG

Applications

ELISA, WB

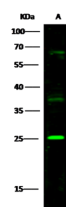
Dilutions

WB: 5-10 μ g/ml

ELISA: 0.5-1.0 μ g/mL

This antibody can be used at 0.5-1.0 μ g/mL with the appropriate secondary reagents to detect Human IL1RL1. The detection limit for Human IL1RL1 is approximately 0.00245 ng/well.

Validations



Items	Lanes	A
Sample (whole cell lysate)		Daudi
Sample Volume (μ g/lane)		30
Gel		13% SDS-PAGE reducing gel
Recommended Concentration		5-10 μ g/ml
Secondary Antibody		Dylight 800-labeled Antibody To Rabbit IgG (H+L), at 1:5000 dilution.

IL1RL1 Antibody, Rabbit PAb, Western blot