

# Carlumab reference antibody



Catalog Number: 176807

## Product name

Carlumab reference antibody

## Specificity

Human CCL2 / MCP1

## Antibody description

Anti-CCL2 / MCP1 Antibody (Carlumab)

## Preparation

Recombinant expression and purified from CHO cells.

## Formulation

0.1 M Pro-Ac, 20 mM Arg, pH 5.0

## Storage

-80°C for 2 years under sterile conditions; -20°C for 1 year under sterile conditions; Avoid repeated freeze-thaw cycles.

## Clonality

Monoclonal

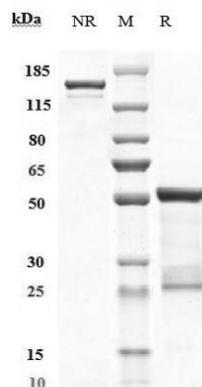
## Ig Type

IgG1

## Applications

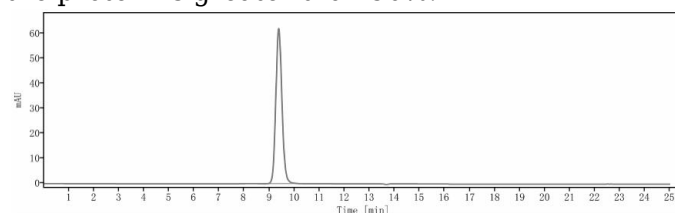
ELISA

## Validations



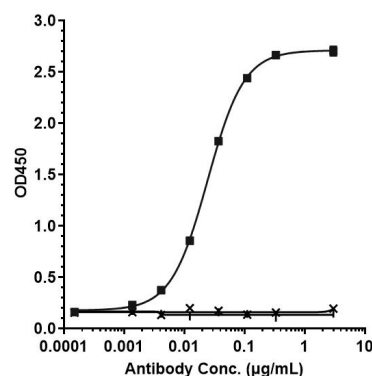
## SDS-PAGE

Anti-CCL2 / MCP1 Antibody (carlumab) on SDS-PAGE under reducing (R) condition. The purity of the protein is greater than 90%.



## SEC-HPLC

The purity of Anti-CCL2 / MCP1 Antibody (carlumab) is more than 95%, determined by SEC-



## HPLC.

Bioactivity: ELISA

Immobilized human MCP1 His at 2 ug/mL can bind Anti-CCL2 / MCP1 Antibody (carlumab), EC50=0.02438 ug/mL.