

LYN antibody



Catalog Number: 112407

Product name

LYN antibody

Recommended Dilution:

WB: 1:500-1:5000

Specificity

Human; other species not tested.

IP: 1:500-1:5000

IHC: 1:20-1:200

Antibody description

LYN Rabbit Polyclonal antibody. Positive WB detected in HeLa cells, HL-60 cells, Jurkat cells, K-562 cells, L02 cells. Positive IP detected in HeLa cells. Positive IF detected in HeLa cells. Positive IHC detected in human kidney tissue, human hepat°Cirrhosis tissue. Positive FC detected in Jurkat cells. Observed molecular weight by Western-blot: 53-56 kDa,66-70 kDa

IF: 1:20-1:200

Preparation

This antibody was obtained by immunization of LYN recombinant protein (Accession Number: NM_002350). Purification method: Antigen affinity purified.

Formulation

PBS with 0.1% sodium azide and 50% glycerol pH 7.3.

Storage

Store at -20°C. DO NOT ALIQUOT

Clonality

Polyclonal

Ig Type

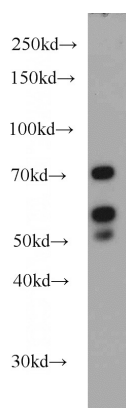
Rabbit IgG

Applications

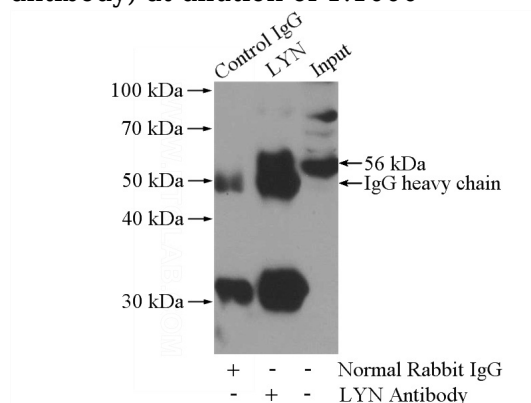
ELISA, WB, IHC, FC, IF, IP

Dilutions

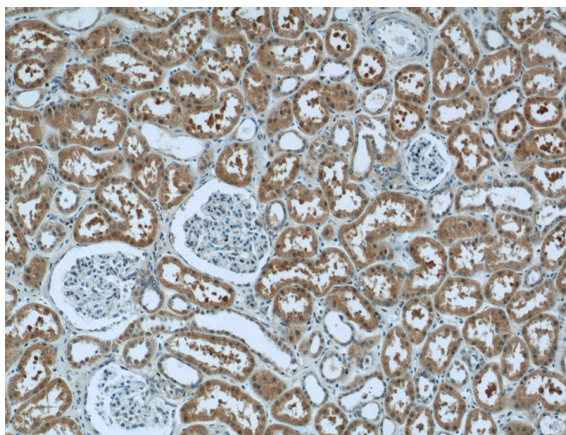
Validations



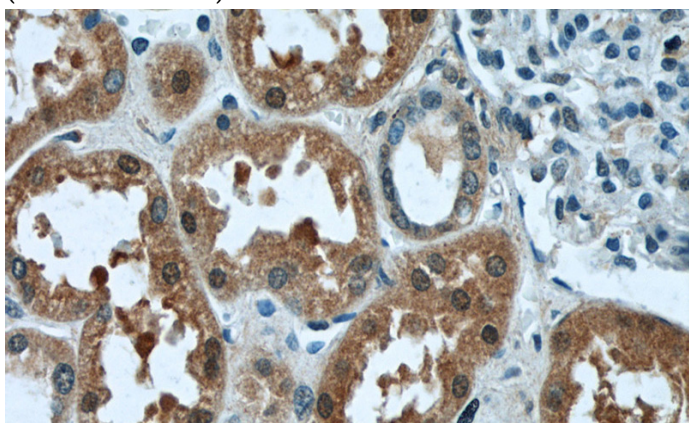
HeLa cells were subjected to SDS PAGE followed by western blot with Catalog No:112407(LYN antibody) at dilution of 1:1000



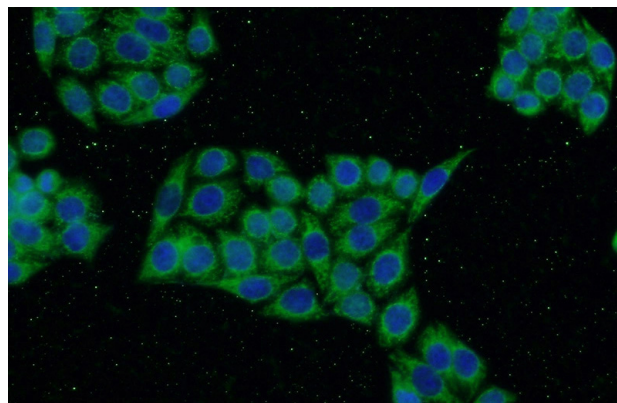
IP Result of anti-LYN (IP:Catalog No:112407, 4ug; Detection:Catalog No:112407 1:1000) with HeLa cells lysate 1200ug.



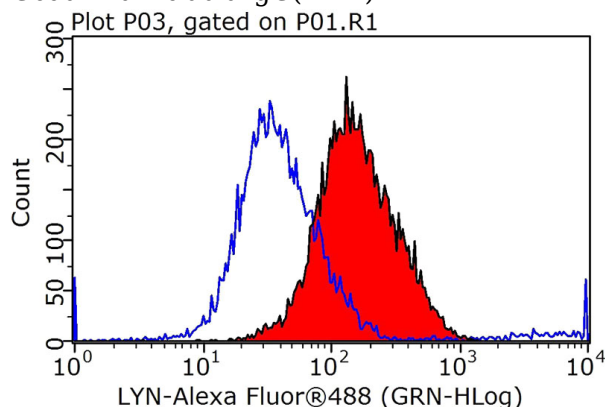
Immunohistochemistry of paraffin-embedded human kidney tissue slide using Catalog No:112407(LYN Antibody) at dilution of 1:50 (under 10x lens)



Immunohistochemistry of paraffin-embedded human kidney tissue slide using Catalog No:112407(LYN Antibody) at dilution of 1:50 (under 40x lens)



Immunofluorescent analysis of HeLa cells using Catalog No:112407(LYN Antibody) at dilution of 1:50 and Alexa Fluor 488-conjugated AffiniPure Goat Anti-Rabbit IgG(H+L)



1X10⁶ Jurkat cells were stained with 0.2ug LYN antibody (Catalog No:112407, red) and control antibody (blue). Fixed with 90% MeOH blocked with 3% BSA (30 min). Alexa Fluor 488-conjugated AffiniPure Goat Anti-Rabbit IgG(H+L) with dilution 1:1000.