

# Anti-DUSP5 antibody



Catalog Number: 176683

## Product name

Anti-DUSP5 antibody

## Dilutions

WB: 1:500

## Specificity

ICC: 1:50

Human, Mouse

## Antibody description

Rabbit polyclonal antibody to DUSP5

## Preparation

This antigen of this antibody was synthetic peptide within human dusp5 aa 82-125.

## Formulation

Liquid, 1\*PBS (pH7.4), 0.2% BSA, 40% Glycerol.  
Preservative: 0.05% Sodium Azide.

## Storage

Store at +4°C after thawing. Aliquot store at -20°C or -80°C. Avoid repeated freeze / thaw cycles.

## Clonality

Polyclonal

## Ig Type

IgG

## Applications

WB, ICC

## Validations

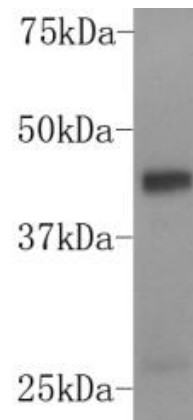


Fig1: Western blot analysis on K562 cell lysates using anti-DUSP5 rabbit polyclonal antibody.

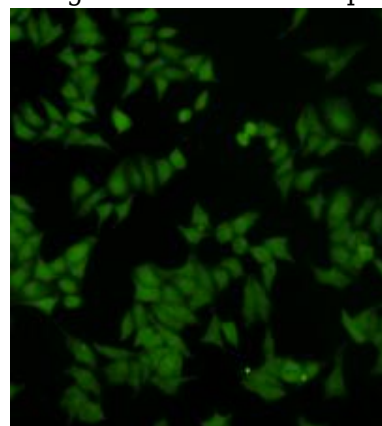


Fig2: ICC image of DUSP5 antibody stained HeLa cells. The secondary antibody (green) was goat anti-rabbit IgG (H+L) FITC conjugated.