

# Anti-DPY30 antibody



Catalog Number: 176663

## Product name

Anti-DPY30 antibody

## Specificity

Human, Mouse

## Antibody description

Mouse monoclonal antibody to DPY30

## Preparation

This antigen of this antibody was peptide

## Formulation

Liquid, 1\*PBS (pH7.4), 0.2% BSA, 40% Glycerol.  
Preservative: 0.05% Sodium Azide.

## Storage

Store at +4°C after thawing. Aliquot store at -20°C or -80°C. Avoid repeated freeze / thaw cycles.

## Clonality

Monoclonal

## Ig Type

IgG1

## Applications

WB, ICC

## Dilutions

WB: 1:500

## Validations

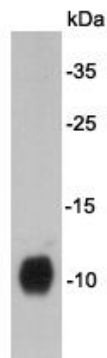


Fig1: Western blot analysis on F9 cell lysates using anti-DPY30 Mouse mAb.

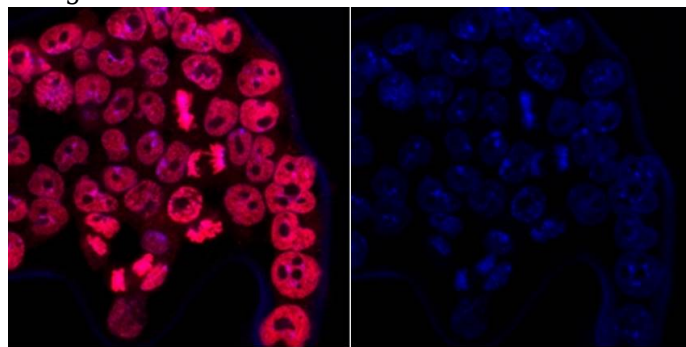


Fig2: ICC staining DPY30 in F9 cells (red). Cells were fixed in paraformaldehyde, permeabilised with 0.25% Triton X100/PBS and counterstained with DAPI in order to highlight the nucleus (blue).

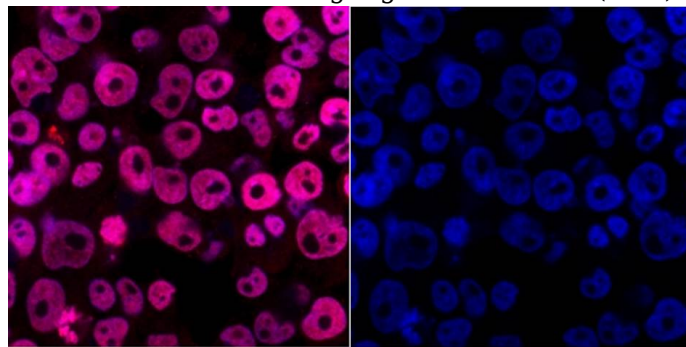


Fig3: ICC staining DPY30 in NCCIT cells (red). Cells were fixed in paraformaldehyde, permeabilised with 0.25% Triton X100/PBS and counterstained with DAPI in order to highlight the nucleus (blue).