

# Anti-TMEM200A antibody



Catalog Number: 176647

## Product name

Anti-TMEM200A antibody

## Specificity

Human, Mouse

## Antibody description

Mouse monoclonal antibody to TMEM200A

## Preparation

This antigen of this antibody was recombinant protein within human transmembrane protein 200a 50-400 aa.

## Formulation

Liquid, 1\*PBS (pH7.4), 0.2% BSA, 40% Glycerol.  
Preservative: 0.05% Sodium Azide.

## Storage

Store at +4°C after thawing. Aliquot store at -20°C. Avoid repeated freeze / thaw cycles.

## Clonality

Monoclonal

## Ig Type

IgG1

## Applications

WB, ICC, IHC-P

## Dilutions

WB: 1:500

ICC: 1:100

IHC-P: 1:50

## Validations

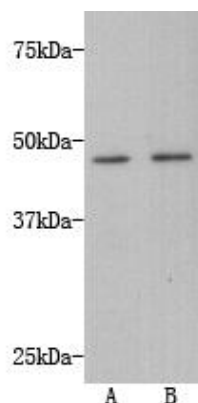


Fig1: Western blot analysis of Transmembrane protein 200A on A549 (1) and HepG2 (2) using anti-Transmembrane protein 200A antibody at 1/500 dilution.

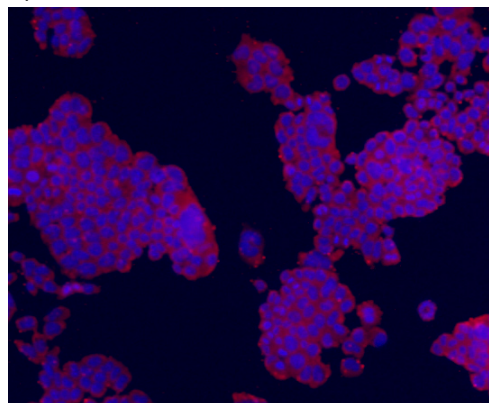


Fig2: ICC staining Transmembrane protein 200A (red) in F9 cells. The nuclear counter stain is DAPI (blue). Cells were fixed in paraformaldehyde, permeabilised with 0.25% Triton X100/PBS.

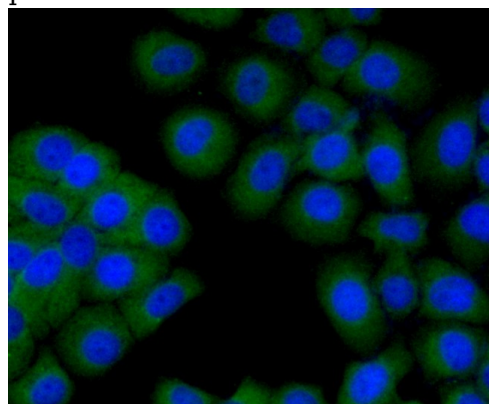


Fig3: ICC staining Transmembrane protein 200A (green) in HepG2 cells. The nuclear counter stain is DAPI (blue). Cells were fixed in paraformaldehyde, permeabilised with 0.25% Triton X100/PBS.

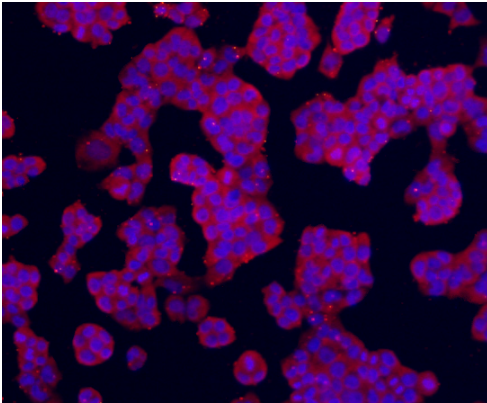


Fig4: ICC staining Transmembrane protein 200A (red) in NCCIT cells. The nuclear counter stain is DAPI (blue). Cells were fixed in paraformaldehyde, permeabilised with 0.25% Triton X100/PBS.

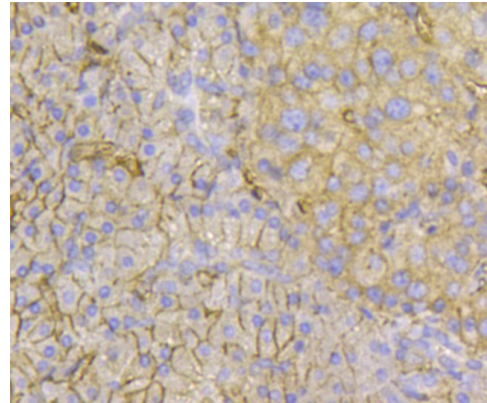


Fig5: Immunohistochemical analysis of paraffin-embedded human pancreas tissue using anti-Transmembrane protein 200A antibody. Counter stained with hematoxylin.