

Anti-JPH2 antibody



Catalog Number: 176637

Product name

WB: 1:500-1:1,000

Anti-JPH2 antibody

ICC: 1:50-1:100

Specificity

IHC-P:1:100

Human, Mouse, Rat

Antibody description

Mouse monoclonal antibody to JPH2

Preparation

This antigen of this antibody was peptide

Formulation

Liquid, 1*PBS (pH7.4), 0.2% BSA, 40% Glycerol.
Preservative: 0.05% Sodium Azide.

Storage

Store at +4°C after thawing. Aliquot store at -20°C or -80°C. Avoid repeated freeze / thaw cycles.

Clonality

Monoclonal

Ig Type

IgG1

Applications

WB, ICC, IHC-P, FC

Dilutions

Validations

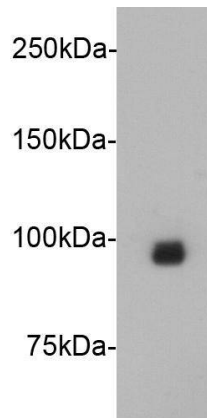


Fig1: Western blot analysis on mouse heartl lysates using anti- Junctophilin-2 Mouse mAb (Cat. # 176637#).

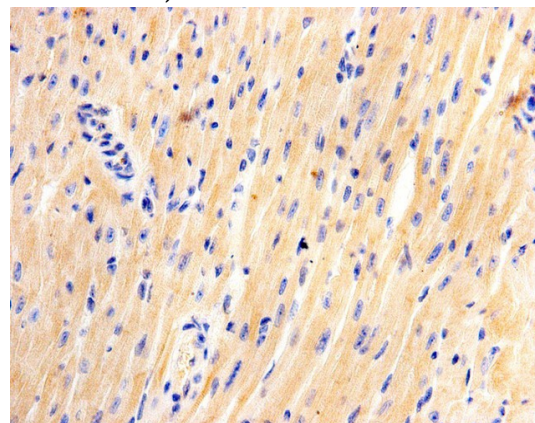


Fig2: Immunohistochemical analysis of paraffin-embedded mouse heart tissue using anti- Junctophilin-2 Mouse mAb (Cat. # 176637#)