

Anti-Atoh1 antibody



Catalog Number: 176636

Product name

Anti-Atoh1 antibody

Specificity

Mouse, Rat

Antibody description

Rabbit monoclonal antibody to Atoh1

Preparation

This antigen of this antibody was recombinant protein.

Formulation

Liquid, 1*TBS (pH7.4), 0.05% BSA, 40% Glycerol.
Preservative: 0.05% Sodium Azide.

Storage

Store at +4°C after thawing. Aliquot store at -20°C. Avoid repeated freeze / thaw cycles.

Clonality

Monoclonal

Ig Type

IgG

Applications

WB

Dilutions

WB: 1:500-1:2,000

Validations

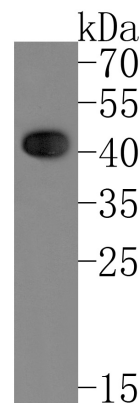


Fig1:; Western blot analysis of MATH1 on rat brain tissue lysates. Proteins were transferred to a PVDF membrane and blocked with 5% NFDM/TBST for 1 hour at room temperature. The primary antibody (1/1,000) was used in 5% NFDM/TBST at room temperature for 2 hours. Goat Anti-Rabbit IgG - HRP Secondary Antibody (HA1001) at 1:200,000 dilution was used for 1 hour at room temperature.

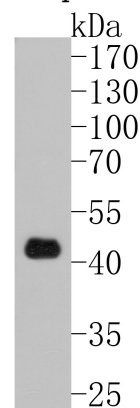


Fig2:; Western blot analysis of MATH1 on mouse brain tissue lysates. Proteins were transferred to a PVDF membrane and blocked with 5% NFDM/TBST for 1 hour at room temperature. The primary antibody (1/500) was used in 5% NFDM/TBST at room temperature for 2 hours. Goat Anti-Rabbit IgG - HRP Secondary Antibody (HA1001) at 1:200,000 dilution was used for 1 hour at room temperature.