

Anti-LOC4331833 antibody



Catalog Number: 176624

Product name

Anti-LOC4331833 antibody

Specificity

Rice

Antibody description

Rabbit polyclonal antibody to LOC4331833

Preparation

This antigen of this antibody was synthetic peptide within rice jaz11 aa 160-209 / 209.

Formulation

Liquid, 1*TBS (pH7.4), 0.2% BSA, 50% Glycerol.
Preservative: 0.05% Sodium Azide.

Storage

Store at +4°C after thawing. Aliquot store at -20°C. Avoid repeated freeze / thaw cycles.

Clonality

Polyclonal

Ig Type

IgG

Applications

ELISA, IF, IHC-P

Dilutions

ELISA:1:10,000

IF:1:50-1:100

IHC-P:1:50-1:200

Validations

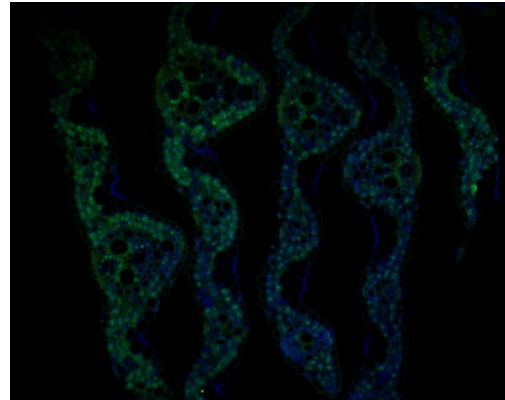


Fig1:: Immunofluorescence staining of paraffin-embedded rice tissue using anti-JAZ11 rabbit polyclonal antibody. The section was pre-treated using heat mediated antigen retrieval with Tris-EDTA buffer (pH 9.0) for 20 minutes. The tissues were blocked in 10% negative goat serum for 1 hour at room temperature, washed with PBS, and then probed with JAZ11 antibody at 1/50 dilution for 10 hours at 4°C and detected using Alexa Fluor® 488 conjugate-Goat anti-Rabbit IgG (H+L) Secondary Antibody at a dilution of 1:500 for 1 hour at room temperature.



Fig2:: Immunohistochemical analysis of paraffin-embedded rice tissue using anti-JAZ11 antibody. The section was pre-treated using heat mediated antigen retrieval with sodium citrate buffer (pH 6.0) for 20 minutes. The tissues were blocked in 5% BSA for 30 minutes at room temperature, washed with ddH₂O and PBS, and then probed with the primary antibody (1/50) for 30 minutes at room temperature. The detection was performed using an HRP conjugated compact polymer system. DAB was used as the chromogen. Tissues were counterstained with hematoxylin and

Anti-LOC4331833 antibody



Catalog Number: 176624

mounted with DPX.