

# Anti-MEIS1 antibody



Catalog Number: 176560

## General Information

### Product name:

Anti-MEIS1 antibody

### Immunogen:

### Applications:

WB, IP, FC

### Specificity:

Human, Mouse, Rat

### Antibody description:

Rabbit monoclonal antibody to MEIS1

### Properties

### Preparation:

This antigen of this antibody was synthetic peptide within human meis1 aa 320-370.

### Formulation:

Liquid, 1\*TBS (pH7.4), 0.05% BSA, 40% Glycerol.  
Preservative: 0.05% Sodium Azide.

### Storage:

Store at +4°C after thawing. Aliquot store at -20°C or -80°C. Avoid repeated freeze / thaw cycles.

### Clonality:

Monoclonal

**Ig Type:** IgG

### Applications

WB: 1:500-1:2,000

FC: 1:50-1:100

## Validations

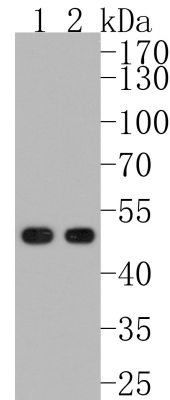


Fig1:; Western blot analysis of MEIS1 on different lysates. Proteins were transferred to a PVDF membrane and blocked with 5% BSA in PBS for 1 hour at room temperature. The primary antibody (1/500) was used in 5% BSA at room temperature for 2 hours. Goat Anti-Rabbit IgG - HRP Secondary Antibody (HA1001) at 1:200,000 dilution was used for 1 hour at room temperature.; Positive control:; Lane 1: Human skeletal muscle tissue lysate; Lane 2: Mouse brain tissue lysate

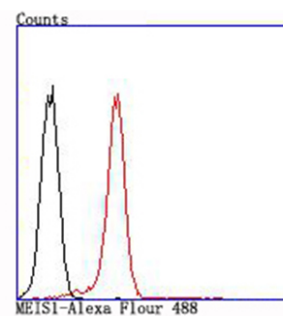


Fig2:; Flow cytometric analysis of MEIS1 was done on K562 cells. The cells were fixed, permeabilized and stained with the primary antibody (1/50) (red). After incubation of the primary antibody at room temperature for an hour, the cells were stained with a Alexa Fluor 488-conjugated Goat anti-Rabbit IgG Secondary antibody at 1/1000 dilution for 30 minutes. Unlabelled sample was used as a control (cells without incubation with primary antibody; black).