

Anti-SMC3 antibody



Catalog Number: 176548

General Information

Product name:

Anti-SMC3 antibody

Immunogen:

Applications:

WB, ICC/IF, IHC-P, FC

Specificity:

Human, Mouse, Rat

Antibody description:

Rabbit monoclonal antibody to SMC3

Properties

Preparation:

This antigen of this antibody was recombinant protein

Formulation:

Liquid, 1*TBS (pH7.4), 0.05% BSA, 40% Glycerol.
Preservative: 0.05% Sodium Azide.

Storage:

Store at +4°C after thawing. Aliquot store at -20°C or -80°C. Avoid repeated freeze / thaw cycles.

Clonality:

Monoclonal

Ig Type:IgG

Applications

WB: 1:1,000-1:5,000

ICC/IF: 1:100-1:500

IHC-P: 1:50-1:200

FC: 1:50-1:100

Validations

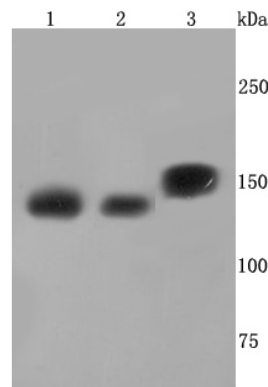


Fig1: Western blot analysis of SMC3 on different cells lysates using anti-SMC3 antibody at 1/1,000 dilution.; Positive control:; Line1: HepG2; Line2: NIH-3T3; Line3:PC12

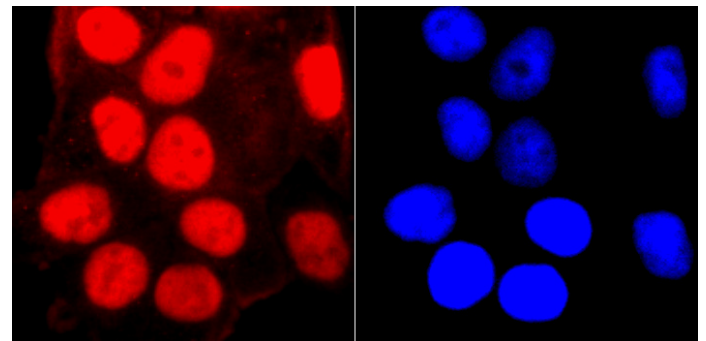


Fig2: ICC staining SMC3 in HeLa cells (red). The nuclear counter stain is DAPI (blue). Cells were fixed in paraformaldehyde, permeabilised with 0.25% Triton X100/PBS.

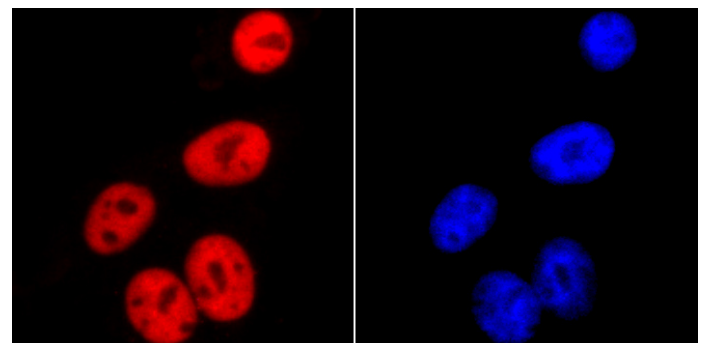


Fig3: ICC staining SMC3 in HepG2 cells (red). The

Anti-SMC3 antibody

Catalog Number: 176548

nuclear counter stain is DAPI (blue). Cells were fixed in paraformaldehyde, permeabilised with 0.25% Triton X100/PBS.

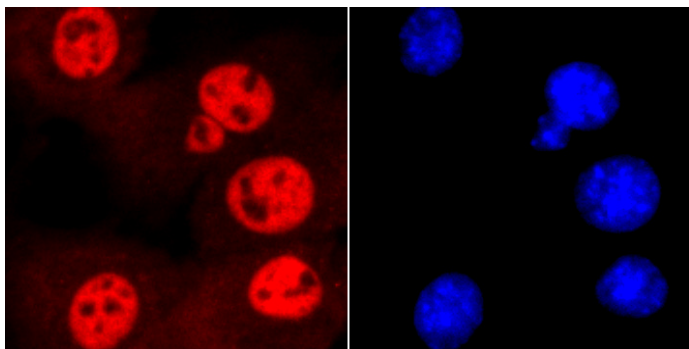


Fig4: ICC staining SMC3 in NIH-3T3 cells (red). The nuclear counter stain is DAPI (blue). Cells were fixed in paraformaldehyde, permeabilised with 0.25% Triton X100/PBS.

SMC3 antibody. Counter stained with hematoxylin.

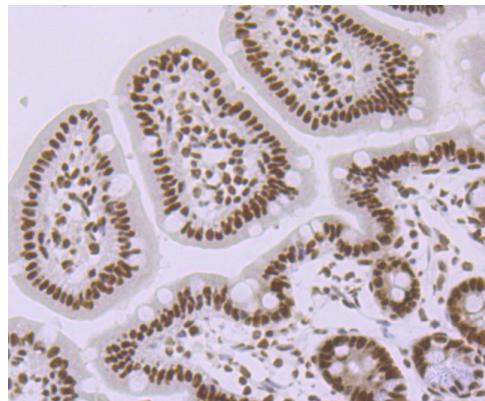


Fig7: Immunohistochemical analysis of paraffin-embedded mouse colon tissue using anti-SMC3 antibody. Counter stained with hematoxylin.

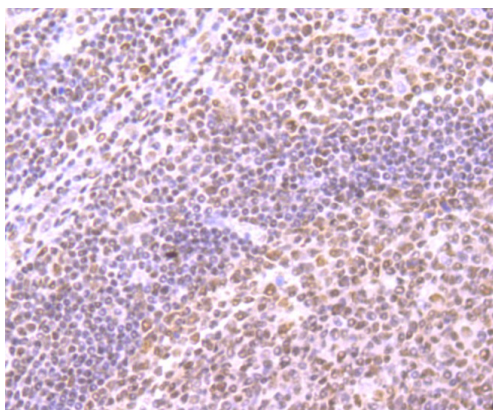


Fig5: Immunohistochemical analysis of paraffin-embedded human tonsil tissue using anti-SMC3 antibody. Counter stained with hematoxylin.

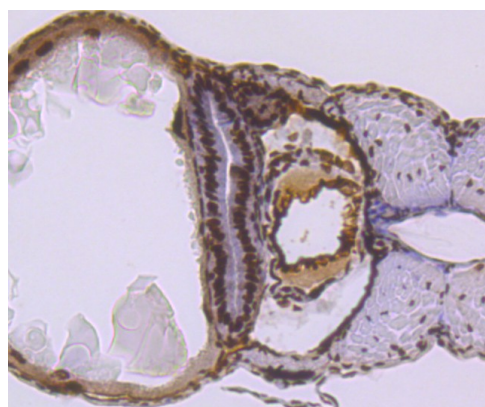


Fig8: Immunohistochemical analysis of paraffin-embedded zebrafish tissue using anti-SMC3 antibody. Counter stained with hematoxylin.

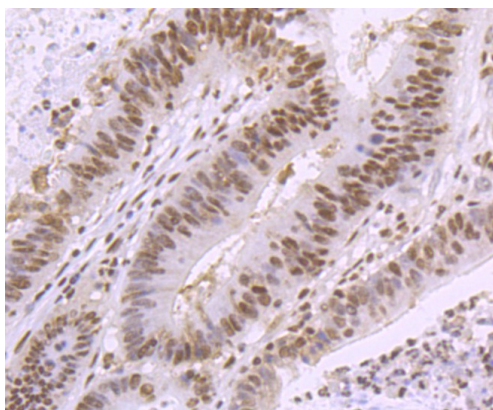


Fig6: Immunohistochemical analysis of paraffin-embedded human colon cancer tissue using anti-

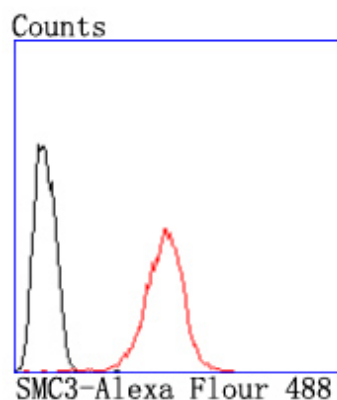


Fig9: Flow cytometric analysis of HeLa cells with SMC3 antibody at 1/50 dilution (red) compared with an unlabelled control (cells without

Anti-SMC3 antibody



Catalog Number: 176548

incubation with primary antibody; black). Alexa

Fluor 488-conjugated goat anti rabbit IgG was used as the secondary a