

# Anti-LAMA3 antibody



Catalog Number: 176541

## General Information

### Product name:

Anti-LAMA3 antibody

### Immunogen:

### Applications:

WB, ICC/IF

### Specificity:

Human

### Antibody description:

Rabbit monoclonal antibody to LAMA3

### Properties

### Preparation:

This antigen of this antibody was recombinant protein within human laminnin 5 alpha 3 aa 50-150.

### Formulation:

Liquid, 1\*TBS (pH7.4), 0.05% BSA, 40% Glycerol. Preservative: 0.05% Sodium Azide.

### Storage:

Store at +4°C after thawing. Aliquot store at -20°C or -80°C. Avoid repeated freeze / thaw cycles.

### Clonality:

Monoclonal

### Ig Type: IgG

### Applications

WB: 1:500-1:1,000

ICC/IF: 1:100-1:500

## Validations

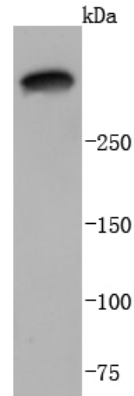


Fig1:; Western blot analysis of Laminnin 5 alpha 3 on A431 cell lysates. Proteins were transferred to a PVDF membrane and blocked with 5% BSA in PBS for 1 hour at room temperature. The primary antibody (ET1701-99, 1/500) was used in 5% BSA at room temperature for 2 hours. Goat Anti-Rabbit IgG - HRP Secondary Antibody (HA1001) at 1:200,000 dilution was used for 1 hour at room temperature.

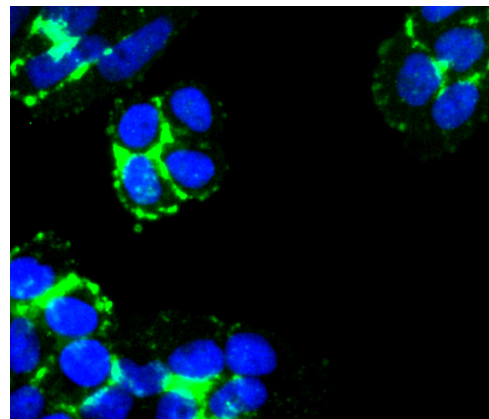


Fig2:; ICC staining of Laminnin 5 alpha 3 in HeLa cells (green). Formalin fixed cells were permeabilized with 0.1% Triton X-100 in TBS for 10 minutes at room temperature and blocked with 1% Blocker BSA for 15 minutes at room temperature. Cells were probed with the primary antibody (ET1701-99, 1/50) for 1 hour at room temperature, washed with PBS. Alexa Fluor®488 Goat anti-Rabbit IgG was used as the secondary antibody at 1/1,000 dilution. The nuclear counter stain is DAPI (blue).

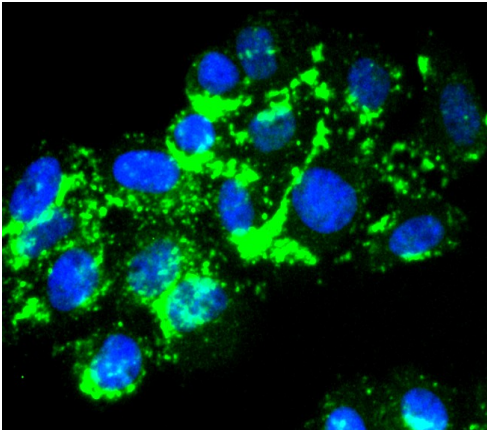


Fig3;; ICC staining of Laminnin 5 alpha 3 in HepG2 cells (green). Formalin fixed cells were permeabilized with 0.1% Triton X-100 in TBS for 10 minutes at room temperature and blocked with 1% Blocker BSA for 15 minutes at room temperature. Cells were probed with the primary antibody (ET1701-99, 1/50) for 1 hour at room temperature, washed with PBS. Alexa Fluor®488 Goat anti-Rabbit IgG was used as the secondary antibody at 1/1,000 dilution. The nuclear counter stain is DAPI (blue).