

Anti-CDC42EP1 antibody



Catalog Number: 176536

General Information

Product name:

Anti-CDC42EP1 antibody

Immunogen:

Applications:

WB

Specificity:

Human

Antibody description:

Rabbit monoclonal antibody to CDC42EP1

Properties

Preparation:

This antigen of this antibody was recombinant protein

Formulation:

Liquid, 1*TBS (pH7.4), 0.05% BSA, 40% Glycerol.
Preservative: 0.05% Sodium Azide.

Storage:

Store at +4°C after thawing. Aliquot store at -20°C or -80°C. Avoid repeated freeze / thaw cycles.

Clonality:

Monoclonal

Ig Type: IgG

Applications

WB: 1:1,000-1:2,000

Validations

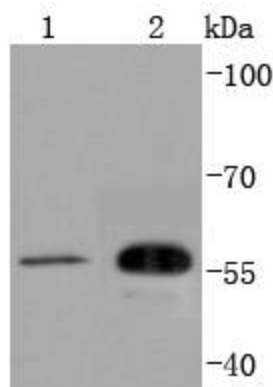


Fig1: Western blot analysis of CDC42EP1 on different lysates using anti-CDC42EP1 antibody at 1/1,000 dilution.; Positive control.; Lane 1: HUVEC; Lane 2: HeLa