

Anti-CDC40 antibody



Catalog Number: 176535

General Information

Product name:

Anti-CDC40 antibody

Immunogen:

Applications:

WB, ICC/IF, IHC-P, FC

Specificity:

Human, Mouse, Rat

Antibody description:

Rabbit monoclonal antibody to CDC40

Properties

Preparation:

This antigen of this antibody was recombinant protein

Formulation:

Liquid, 1*TBS (pH7.4), 0.05% BSA, 40% Glycerol. Preservative: 0.05% Sodium Azide.

Storage:

Store at +4°C after thawing. Aliquot store at -20°C or -80°C. Avoid repeated freeze / thaw cycles.

Clonality:

Monoclonal

Ig Type: IgG

Applications

WB: 1:1,000-1:5,000

ICC/IF: 1:50-1:200

IHC-P: 1:50-1:200

FC: 1:50-1:100

Validations

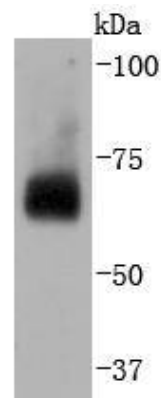


Fig1: Western blot analysis of CDC40 on HeLa cells lysates using anti-CDC40 antibody at 1/2,000 dilution.

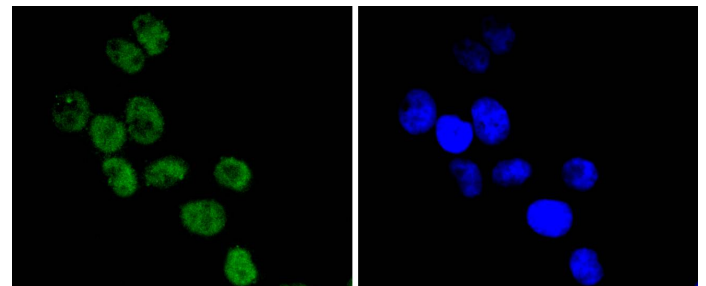


Fig2: ICC staining CDC40 in HeLa cells (green). The nuclear counter stain is DAPI (blue). Cells were fixed in paraformaldehyde, permeabilised with 0.25% Triton X100/PBS.

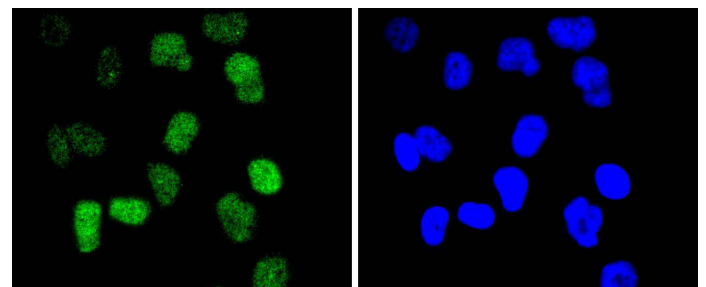


Fig3: ICC staining CDC40 in HUVEC cells (green). The nuclear counter stain is DAPI (blue). Cells were fixed in paraformaldehyde, permeabilised with 0.25% Triton X100/PBS.

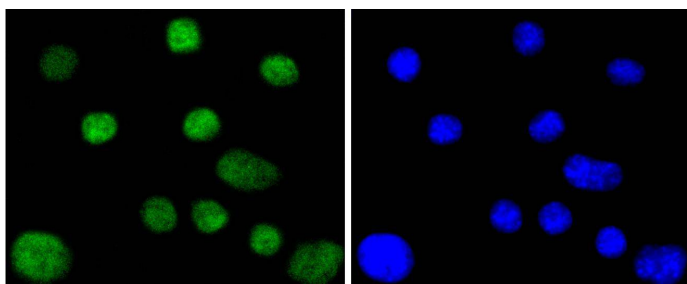


Fig4: ICC staining CDC40 in SHG-44 cells (green). The nuclear counter stain is DAPI (blue). Cells were fixed in paraformaldehyde, permeabilised with 0.25% Triton X100/PBS.

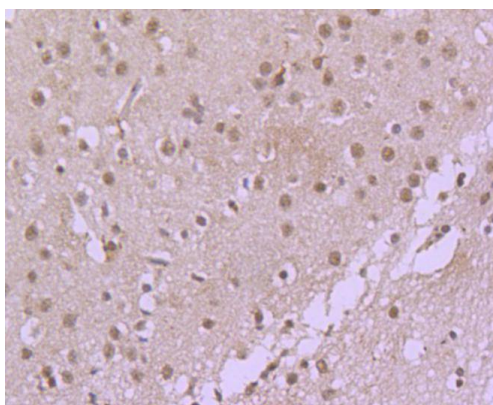


Fig5: Immunohistochemical analysis of paraffin-embedded rat brain tissue using anti-CDC40 antibody. Counter stained with hematoxylin.

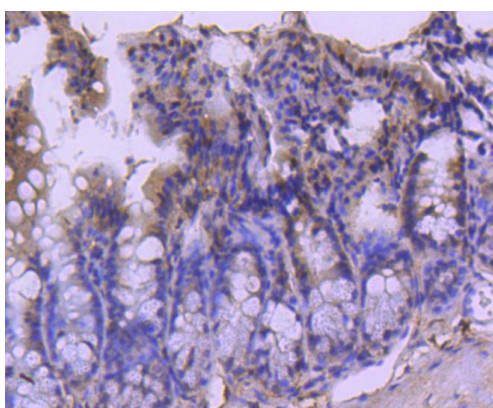


Fig6: Immunohistochemical analysis of paraffin-embedded mouse colon tissue using anti-CDC40 antibody. Counter stained with hematoxylin.

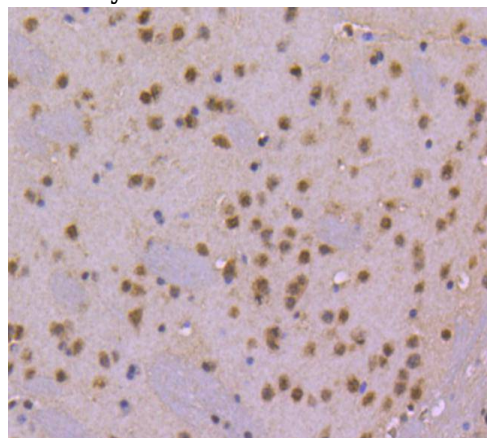


Fig7: Immunohistochemical analysis of paraffin-embedded mouse brain tissue using anti-CDC40 antibody. Counter stained with hematoxylin.

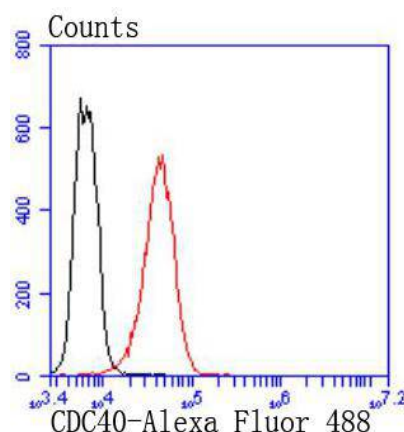


Fig8: Flow cytometric analysis of K562 cells with CDC40 antibody at 1/50 dilution (red) compared with an unlabelled control (cells without incubation with primary antibody; black). Alexa Fluor 488-conjugated goat anti rabbit IgG was used as the secondary