

Anti-E2F2 antibody



Catalog Number: 176530

General Information

Product name:

Anti-E2F2 antibody

Immunogen:

Applications:

WB, FC

Specificity:

Human, Mouse, Rat

Antibody description:

Rabbit monoclonal antibody to E2F2

Properties

Preparation:

This antigen of this antibody was recombinant protein within human e2f2 aa 300-437.

Formulation:

Liquid, 1*TBS (pH7.4), 0.05% BSA, 40% Glycerol. Preservative: 0.05% Sodium Azide.

Storage:

Store at +4°C after thawing. Aliquot store at -20°C or -80°C. Avoid repeated freeze / thaw cycles.

Clonality:

Monoclonal

Ig Type: IgG

Applications

WB: 1:1,000-1:2,000

FC: 1:50-1:100

Validations

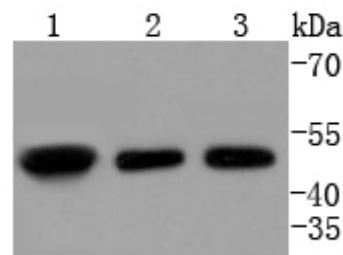


Fig1:: Western blot analysis of E2F2 on different lysates. Proteins were transferred to a PVDF membrane and blocked with 5% BSA in PBS for 1 hour at room temperature. The primary antibody (1/500) was used in 5% BSA at room temperature for 2 hours. Goat Anti-Rabbit IgG - HRP Secondary Antibody (HA1001) at 1:200,000 dilution was used for 1 hour at room temperature.; Positive control;; Lane 1: K562 cell lysate; Lane 2: 293T cell lysate; Lane 3: HepG2 cell lysate

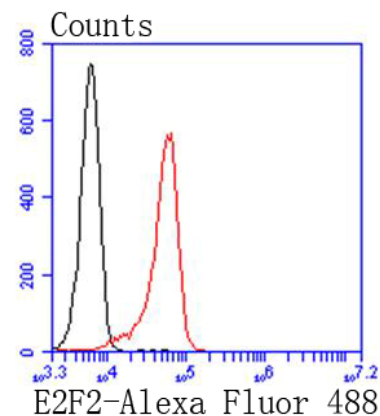


Fig2:: Flow cytometric analysis of E2F2 was done on K562 cells. The cells were fixed, permeabilized and stained with the primary antibody (1/50) (red). After incubation of the primary antibody at room temperature for an hour, the cells were stained with a Alexa Fluor 488-conjugated Goat anti-Rabbit IgG Secondary antibody at 1/1000 dilution for 30 minutes. Unlabelled sample was used as a control (cells without incubation with primary antibody; black).