

Anti-BPI antibody

Catalog Number: 176527

General Information

Product name:

Anti-BPI antibody

Immunogen:

Applications:

WB, FC

Specificity:

Human, Zebrafish

Antibody description:

Rabbit monoclonal antibody to BPI

Properties

Preparation:

This antigen of this antibody was synthetic peptide within human bpi aa 120-170.

Formulation:

Liquid, 1*TBS (pH7.4), 0.05% BSA, 40% Glycerol.
Preservative: 0.05% Sodium Azide.

Storage:

Store at +4°C after thawing. Aliquot store at -20°C or -80°C. Avoid repeated freeze / thaw cycles.

Clonality:

Monoclonal

Ig Type: IgG

Applications

WB: 1:1,000-1:2,000

FC: 1:50-1:100

Validations

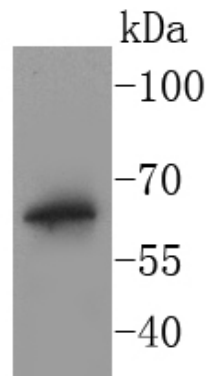


Fig1:: Western blot analysis of BPI on THP-1 cell lysates. Proteins were transferred to a PVDF membrane and blocked with 5% BSA in PBS for 1 hour at room temperature. The primary antibody (1/500) was used in 5% BSA at room temperature for 2 hours. Goat Anti-Rabbit IgG - HRP Secondary Antibody (HA1001) at 1:40,000 dilution was used for 1 hour at room temperature.

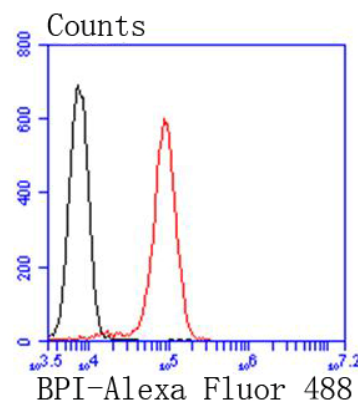


Fig2:: Flow cytometric analysis of BPI was done on Jurkat cells. The cells were fixed, permeabilized and stained with the primary antibody (1/50) (red). After incubation of the primary antibody at room temperature for an hour, the cells were stained with a Alexa Fluor 488-conjugated Goat anti-Rabbit IgG Secondary antibody at 1/1000 dilution for 30 minutes. Unlabelled sample was used as a control (cells without incubation with primary antibody; black).