

# Anti-DLEU7 antibody

Catalog Number: 176491

---

**Product name**

Anti-DLEU7 antibody

**Specificity**

Human

**Antibody description**

Rabbit polyclonal antibody to DLEU7

**Preparation**

This antigen of this antibody was the antiserum was produced against synthesized peptide derived from the internal region of human dleu7. aa range:51-100

**Formulation**

Liquid, Liquid in PBS containing 50% glycerol, 0.5% BSA and 0.02% sodium azide.

**Storage**

Store at +4°C after thawing. Aliquot store at -20°C or -80°C. Avoid repeated freeze / thaw cycles.

**Clonality**

Polyclonal

**Ig Type**

IgG

**Applications**

IHC-P

**Dilutions**

IHC-P: 1:50-200

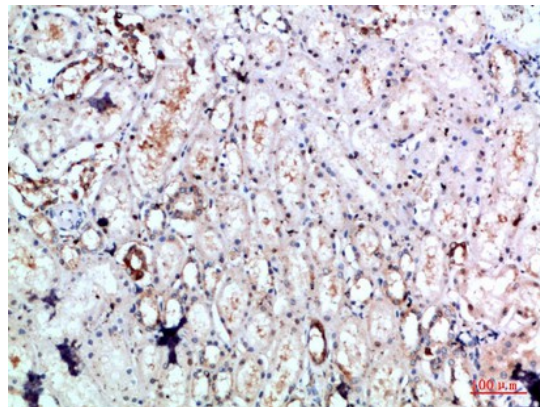
**Validations**

Fig1.; Immunohistochemical analysis of paraffin-embedded human-kidney, antibody was diluted at 1:200