

# Anti-CXCL3 antibody



Catalog Number: 176487

---

## Product name

Polyclonal

Anti-CXCL3 antibody

## Ig Type

## Specificity

IgG

Human

## Applications

## Antibody description

IHC-P

Rabbit polyclonal antibody to CXCL3

## Dilutions

## Preparation

IHC-P: 1:50-200

This antigen of this antibody was the antiserum was produced against synthesized peptide derived from the c-terminal region of human cxcl3. aa range:58-107

## Formulation

Liquid, Liquid in PBS containing 50% glycerol, 0.5% BSA and 0.02% sodium azide.

## Storage

Store at +4°C after thawing. Aliquot store at -20°C or -80°C. Avoid repeated freeze / thaw cycles.

## Clonality

## Validations

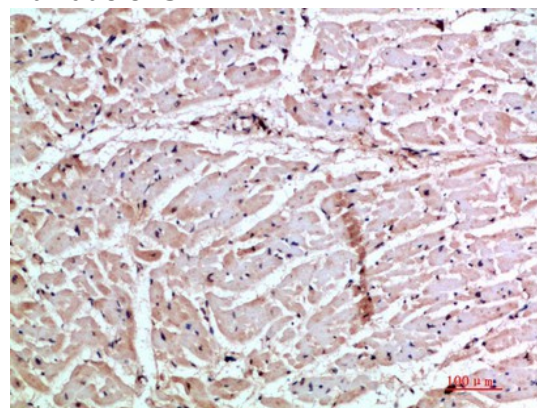


Fig1:: Immunohistochemical analysis of paraffin-embedded human-heart, antibody was diluted at 1:200