

# Anti-KMT2A antibody

Catalog Number: 176475

---

## Product name

Anti-KMT2A antibody

## Specificity

Human, Mouse, Rat

## Antibody description

Rabbit polyclonal antibody to KMT2A

## Preparation

This antigen of this antibody was synthetic peptide from human protein at aa range: 3850-3900

## Formulation

Liquid, Liquid in PBS containing 50% glycerol, 0.5% BSA and 0.02% sodium azide.

## Storage

Store at +4°C after thawing. Aliquot store at -20°C or -80°C. Avoid repeated freeze / thaw cycles.

## Clonality

Polyclonal

## Ig Type

IgG

## Applications

IHC-P

## Dilutions

IHC-P: 1:50-200

## Validations

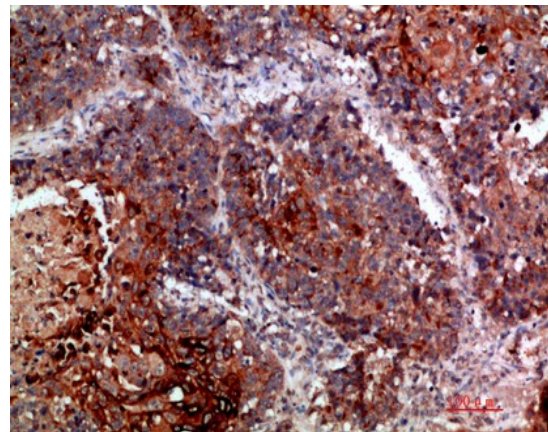


Fig1.; Immunohistochemical analysis of paraffin-embedded human-lung-cancer, antibody was diluted at 1:200