

Anti-TPSD1 antibody



Catalog Number: 176470

Product name

Anti-TPSD1 antibody

Specificity

Human

Antibody description

Rabbit polyclonal antibody to TPSD1

Preparation

This antigen of this antibody was synthesized peptide derived from tryptase-3 at aa range: 51-100

Formulation

Liquid, Liquid in PBS containing 50% glycerol, 0.5% BSA and 0.02% sodium azide.

Storage

Store at +4°C after thawing. Aliquot store at -20°C or -80°C. Avoid repeated freeze / thaw cycles.

Clonality

Polyclonal

Ig Type

IgG

Applications

WB

Dilutions

WB: 1:500-1:2000

Validations

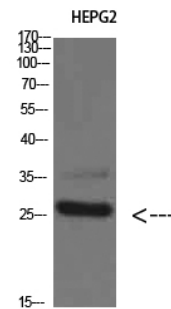


Fig1:: Western Blot analysis of HEPG2 cells using Tryptase-3 Polyclonal Antibody diluted at 1:800. Secondary antibody (catalog#: HA1001) was diluted at 1:20000

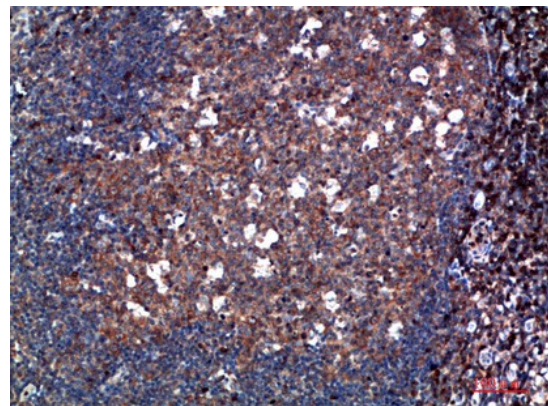


Fig2:: Immunohistochemical analysis of paraffin-embedded human tonsil, antibody was diluted at 1:200