

# Anti-GDF7 antibody



Catalog Number: 176453

## Product name

Anti-GDF7 antibody

## Specificity

Human, Mouse, Rat

## Antibody description

Rabbit polyclonal antibody to GDF7

## Preparation

This antigen of this antibody was the antiserum was produced against synthesized peptide derived from the internal region of human gdf7. aa range:321-370

## Formulation

Liquid, Liquid in PBS containing 50% glycerol, 0.5% BSA and 0.02% sodium azide.

## Storage

Store at +4°C after thawing. Aliquot store at -20°C or -80°C. Avoid repeated freeze / thaw cycles.

## Clonality

Polyclonal

## Ig Type

IgG

## Applications

WB, IHC-P

## Dilutions

WB: 1:500-1:2000

IHC-P: 1:100-1:300

## Validations

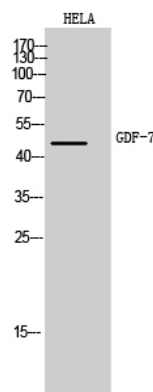


Fig1:: Western Blot analysis of HeLa cells using GDF-7 Polyclonal Antibody. Antibody was diluted at 1:1000. Secondary antibody (catalog#: HA1001) was diluted at 1:20000