

Anti-CD300LD antibody



Catalog Number: 176450

Product name

Polyclonal

Anti-CD300LD antibody

Ig Type

Specificity

IgG

Human

Applications

Antibody description

WB

Rabbit polyclonal antibody to CD300LD

Dilutions

Preparation

WB: 1:500-1:2000

This antigen of this antibody was the antiserum was produced against synthesized peptide derived from the internal region of human cd300ld. aa range:61-110

Validations

Formulation

Liquid, Liquid in PBS containing 50% glycerol, 0.5% BSA and 0.02% sodium azide.

Storage

Store at +4°C after thawing. Aliquot store at -20°C or -80°C. Avoid repeated freeze / thaw cycles.

Clonality

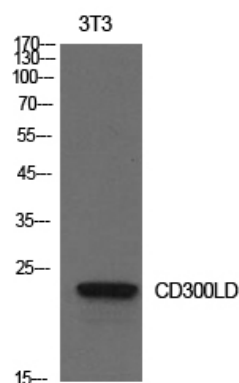


Fig1.; Western Blot analysis of NIH-3T3 cells using CD300d Polyclonal Antibody.. Secondary antibody (catalog#: HA1001) was diluted at 1:20000