

Anti-GP5 antibody



Catalog Number: 176446

Product name

WB, IHC-P

Anti-GP5 antibody

Dilutions

Specificity

WB: 1:500-1:2000

Human, Mouse, Rat

IHC-P: 1:100-1:300

Antibody description

Rabbit polyclonal antibody to GP5

Validations

Preparation

This antigen of this antibody was the antiserum was produced against synthesized peptide derived from the internal region of human gp5. aa range:331-380

Formulation

Liquid, Liquid in PBS containing 50% glycerol, 0.5% BSA and 0.02% sodium azide.

Storage

Store at +4°C after thawing. Aliquot store at -20°C or -80°C. Avoid repeated freeze / thaw cycles.

Clonality

Polyclonal

Ig Type

IgG

Applications

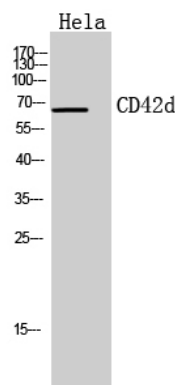


Fig1:: Western Blot analysis of HeLa cells using CD42d Polyclonal Antibody.. Secondary antibody [catalog#: HA1001) was diluted at 1:20000

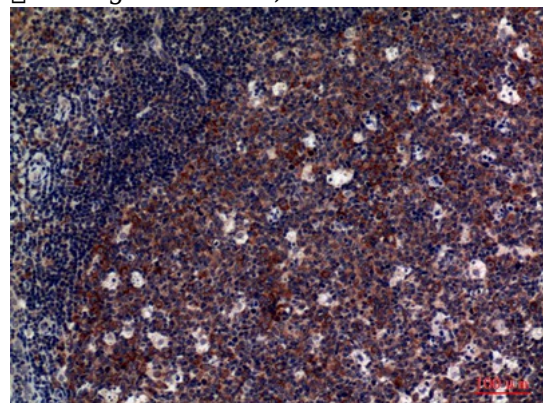


Fig2:: Immunohistochemical analysis of paraffin-embedded human-tonsils, antibody was diluted at 1:100