

# Anti-POLR3G antibody



Catalog Number: 176439

## Product name

Anti-POLR3G antibody

## Specificity

Human, Mouse

## Antibody description

Rabbit polyclonal antibody to POLR3G

## Preparation

This antigen of this antibody was the antiserum was produced against synthesized peptide derived from the internal region of human polr3g. aa range:151-200

## Formulation

Liquid, Liquid in PBS containing 50% glycerol, 0.5% BSA and 0.02% sodium azide.

## Storage

Store at +4°C after thawing. Aliquot store at -20°C or -80°C. Avoid repeated freeze / thaw cycles.

## Clonality

Polyclonal

## Ig Type

IgG

## Applications

WB, IHC-P

## Dilutions

WB: 1:500-1:2000

IHC-P: 1:100-1:300

## Validations

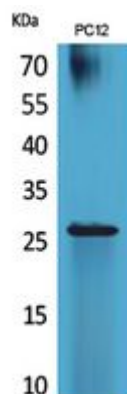


Fig1:: Western Blot analysis of PC12 cells using POLR3G Polyclonal Antibody.. Secondary antibody [catalog#: HA1001) was diluted at 1:20000 cells nucleus extracted by Minute TM Cytoplasmic and Nuclear Fractionation kit (SC-003, Inventbiotech, MN, USA).

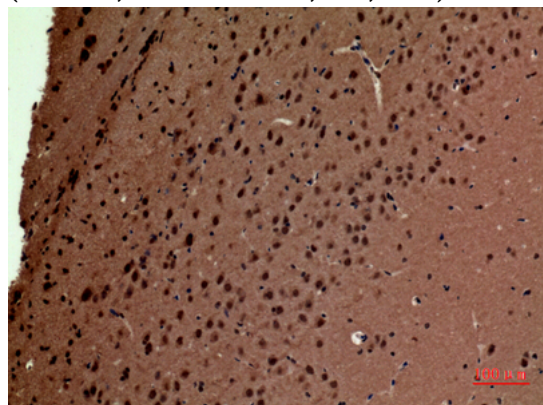


Fig2:: Immunohistochemical analysis of paraffin-embedded mouse-brain, antibody was diluted at 1:100