

Anti-CER1 antibody

Catalog Number: 176432

Product name

Anti-CER1 antibody

Specificity

Human, Rat

Antibody description

Rabbit polyclonal antibody to CER1

Preparation

This antigen of this antibody was the antiserum was produced against synthesized peptide derived from the internal region of human cer1. aa range:91-140

Formulation

Liquid, Liquid in PBS containing 50% glycerol, 0.5% BSA and 0.02% sodium azide.

Storage

Store at +4°C after thawing. Aliquot store at -20°C or -80°C. Avoid repeated freeze / thaw cycles.

Clonality

Polyclonal

Ig Type

IgG

Applications

WB, IHC-P

Dilutions

WB: 1:500-1:2000

IHC-P: 1:100-1:300

Validations



Fig1:: Western Blot analysis of MCF-7 cells using Cerberus Polyclonal Antibody. Antibody was diluted at 1:500. Secondary antibody [catalog#: HA1001) was diluted at 1:20000

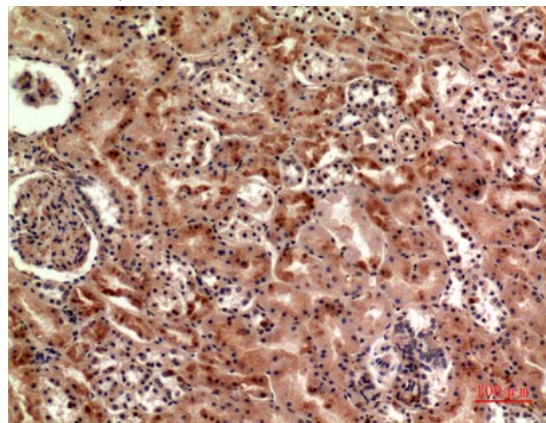


Fig2:: Immunohistochemical analysis of paraffin-embedded human-kidney, antibody was diluted at 1:100