

# Anti-FGF20 antibody



Catalog Number: 176412

## Product name

WB, IHC-P

Anti-FGF20 antibody

## Dilutions

## Specificity

WB: 1:500-1:2000

Human, Mouse, Rat

IHC-P: 1:100-300

## Antibody description

Rabbit polyclonal antibody to FGF20

## Preparation

This antigen of this antibody was the antiserum was produced against synthesized peptide derived from the internal region of human fgf20. aa range:151-200

## Formulation

Liquid, Liquid in PBS containing 50% glycerol, 0.5% BSA and 0.02% sodium azide.

## Storage

Store at +4°C after thawing. Aliquot store at -20°C or -80°C. Avoid repeated freeze / thaw cycles.

## Clonality

Polyclonal

## Ig Type

IgG

## Applications

## Validations

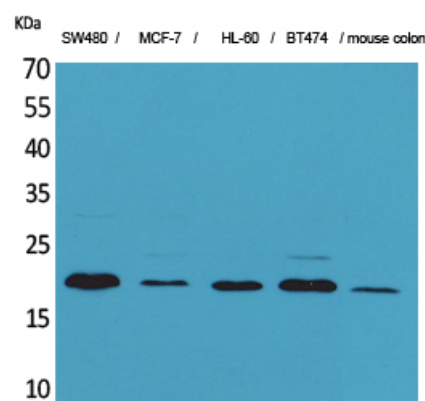


Fig1:: Western Blot analysis of SW480, MCF-7, HL-60, BT474, mouse colon cells using FGF-20 Polyclonal Antibody.. Secondary antibody [catalog#: HA1001) was diluted at 1:20000

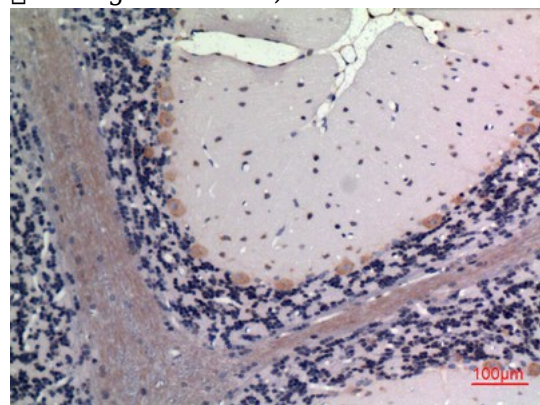


Fig2:: Immunohistochemical analysis of paraffin-embedded rat-brain, antibody was diluted at 1:100