

Anti-TRIM3 antibody



Catalog Number: 176359

Product name

Anti-TRIM3 antibody

Specificity

Human, Mouse, Rat

Antibody description

Rabbit polyclonal antibody to TRIM3

Preparation

This antigen of this antibody was the antiserum was produced against synthesized peptide derived from human trim3. aa range:1-50

Formulation

Liquid, Liquid in PBS containing 50% glycerol, 0.5% BSA and 0.02% sodium azide.

Storage

Store at +4°C after thawing. Aliquot store at -20°C or -80°C. Avoid repeated freeze / thaw cycles.

Clonality

Polyclonal

Ig Type

IgG

Applications

WB, IHC-P, IF

Dilutions

WB: 1:500-1:2000

IHC-P: 1:100-1:300

IF: 1:100-1:500

Validations

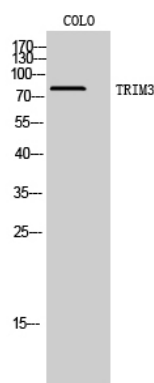


Fig1.: Western Blot analysis of COLO cells using TRIM3 Polyclonal Antibody. Secondary antibody (catalog#: HA1001) was diluted at 1:20000