

Anti-TIGD3 antibody



Catalog Number: 176350

Product name

Anti-TIGD3 antibody

Specificity

Human

Antibody description

Rabbit polyclonal antibody to TIGD3

Preparation

This antigen of this antibody was the antiserum was produced against synthesized peptide derived from human tigd3. aa range:381-430

Formulation

Liquid, Liquid in PBS containing 50% glycerol, 0.5% BSA and 0.02% sodium azide.

Storage

Store at +4°C after thawing. Aliquot store at -20°C or -80°C. Avoid repeated freeze / thaw cycles.

Clonality

Polyclonal

Ig Type

IgG

Applications

WB, IHC-P

Dilutions

WB: 1:500-1:2000

IHC-P: 1:100-1:300

Validations

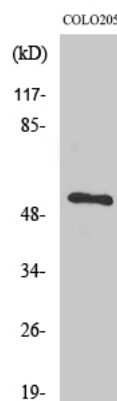


Fig1.; Western Blot analysis of various cells using TIGD3 Polyclonal Antibody. Secondary antibody [catalog#: HA1001) was diluted at 1:20000 cells nucleus extracted by Minute TM Cytoplasmic and Nuclear Fractionation kit (SC-003, Inventbiotech, MN, USA).