

Anti-KLF11 antibody



Catalog Number: 176349

Product name

Anti-KLF11 antibody

Specificity

Human, Mouse

Antibody description

Rabbit polyclonal antibody to KLF11

Preparation

This antigen of this antibody was the antiserum was produced against synthesized peptide derived from human klf11. aa range:1-50

Formulation

Liquid, Liquid in PBS containing 50% glycerol, 0.5% BSA and 0.02% sodium azide.

Storage

Store at +4°C after thawing. Aliquot store at -20°C or -80°C. Avoid repeated freeze / thaw cycles.

Clonality

Polyclonal

Ig Type

IgG

Applications

WB, IHC-P, IF

Dilutions

WB: 1:500-1:2000

IHC-P: 1:100-1:300

IF: 1:100-1:500

Validations

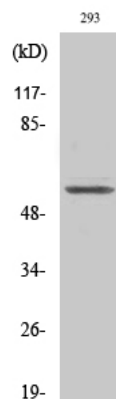


Fig1.; Western Blot analysis of various cells using TIEG2 Polyclonal Antibody cells nucleus extracted by Minute TM Cytoplasmic and Nuclear Fractionation kit (SC-003, Inventbiotech, MN, USA).