

# Anti-SERINC2 antibody



Catalog Number: 176340

## Product name

Anti-SERINC2 antibody

## Specificity

Human, Mouse, Rat

## Antibody description

Rabbit polyclonal antibody to SERINC2

## Preparation

This antigen of this antibody was the antiserum was produced against synthesized peptide derived from human serc2. aa range:341-390

## Formulation

Liquid, Liquid in PBS containing 50% glycerol, 0.5% BSA and 0.02% sodium azide.

## Storage

Store at +4°C after thawing. Aliquot store at -20°C or -80°C. Avoid repeated freeze / thaw cycles.

## Clonality

Polyclonal

## Ig Type

IgG

## Applications

WB, IHC-P, IF

## Dilutions

WB: 1:500-1:2000

IHC-P: 1:100-1:300

IF: 1:100-1:500

## Validations

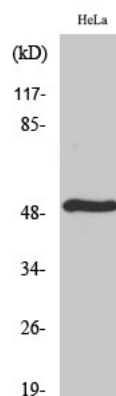


Fig1.; Western blot analysis of TDE2L on hela cells lysates. Proteins were transferred to a PVDF membrane and blocked with 5% BSA in PBS for 1 hour at room temperature. The primary antibody (1/500) was used in 5% BSA at room temperature for 2 hours. Goat Anti-Rabbit IgG - HRP Secondary Antibody (HA1001) at 1:5,000 dilution was used for 1 hour at room temperature.