

# Anti-TAS2R8 antibody



Catalog Number: 176330

## Product name

Polyclonal

Anti-TAS2R8 antibody

## Ig Type

Rabbit IgG

## Specificity

Human

## Applications

WB, IF

## Antibody description

Rabbit polyclonal antibody to TAS2R8

## Dilutions

WB: 1:500-1:2000

## Preparation

IF: 1:100-1:500

This antigen of this antibody was the antiserum was produced against synthesized peptide derived from human tas2r8. aa range:45-94

## Validations

## Formulation

Liquid, Liquid in PBS containing 50% glycerol, 0.5% BSA and 0.02% sodium azide.

## Storage

Store at +4°C after thawing. Aliquot store at -20°C or -80°C. Avoid repeated freeze / thaw cycles.

## Clonality

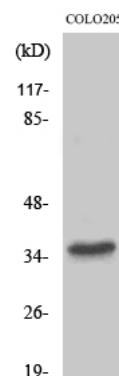


Fig1.; Western Blot analysis of various cells using T2R8 Polyclonal Antibody