

# Anti-TAS2R14 antibody



Catalog Number: 176328

## Product name

WB, IF

Anti-TAS2R14 antibody

## Dilutions

## Specificity

WB: 1:500-1:2000

Human

IF: 1:100-1:500

## Antibody description

Rabbit polyclonal antibody to TAS2R14

## Preparation

This antigen of this antibody was the antiserum was produced against synthesized peptide derived from human tas2r14. aa range:229-278

## Formulation

Liquid, Liquid in PBS containing 50% glycerol, 0.5% BSA and 0.02% sodium azide.

## Storage

Store at +4°C after thawing. Aliquot store at -20°C or -80°C. Avoid repeated freeze / thaw cycles.

## Clonality

Polyclonal

## Ig Type

Rabbit IgG

## Applications

## Validations

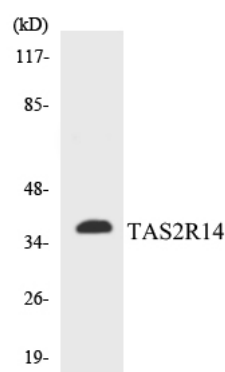


Fig1:; Western blot analysis of lysates from MCF-7 cells, using TAS2R14 Antibody. The lane on the right is blocked with the synthesized peptide.

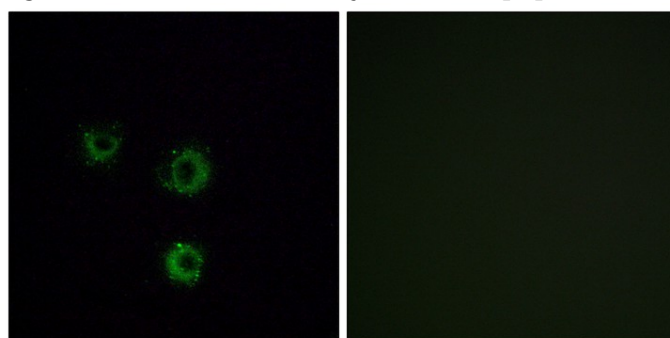


Fig2:; Immunofluorescence analysis of MCF7 cells, using TAS2R14 Antibody. The picture on the right is blocked with the synthesized peptide.