

# Anti-SERINC1 antibody



Catalog Number: 176306

## Product name

Anti-SERINC1 antibody

## Ig Type

Rabbit IgG

## Specificity

Human, Mouse, Rat

## Applications

WB, IHC-P, IF

## Antibody description

Rabbit polyclonal antibody to SERINC1

## Dilutions

WB: 1:500-1:2000

## Preparation

This antigen of this antibody was the antiserum was produced against synthesized peptide derived from human serc1. aa range:381-430

IHC-P: 1:100-1:300

IF: 1:100-1:500

## Formulation

Liquid, Liquid in PBS containing 50% glycerol, 0.5% BSA and 0.02% sodium azide.

## Storage

Store at +4°C after thawing. Aliquot store at -20°C or -80°C. Avoid repeated freeze / thaw cycles.

## Clonality

Polyclonal

## Validations

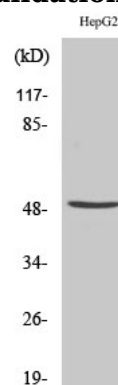


Fig1.; Western Blot analysis of various cells using Serinc1 Polyclonal Antibody