

# Anti-N4BP2L2 antibody



Catalog Number: 176251

## Product name

Anti-N4BP2L2 antibody

## Specificity

Human, Mouse

## Antibody description

Rabbit polyclonal antibody to N4BP2L2

## Preparation

This antigen of this antibody was the antiserum was produced against synthesized peptide derived from human n4bp2l2. aa range:358-407

## Formulation

Liquid, Liquid in PBS containing 50% glycerol, 0.5% BSA and 0.02% sodium azide.

## Storage

Store at +4°C after thawing. Aliquot store at -20°C or -80°C. Avoid repeated freeze / thaw cycles.

## Clonality

Polyclonal

## Ig Type

Rabbit IgG

## Applications

WB

## Dilutions

WB: 1:500-1:2000

## Validations

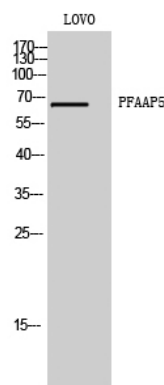


Fig1.; Western Blot analysis of LOVO cells using PFAAP5 Polyclonal Antibody