

# Anti-RRH antibody

Catalog Number: 176250

---

**Product name**

Polyclonal

Anti-RRH antibody

**Ig Type****Specificity**

Rabbit IgG

Human

**Applications****Antibody description**

WB, IHC-P

Rabbit polyclonal antibody to RRH

**Dilutions****Preparation**

WB: 1:500-1:2000

This antigen of this antibody was the antiserum was produced against synthesized peptide derived from human rrrh. aa range:201-250

**Validations****Formulation**

Liquid, Liquid in PBS containing 50% glycerol, 0.5% BSA and 0.02% sodium azide.

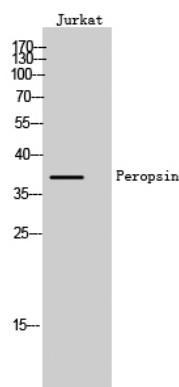


Fig1.; Western Blot analysis of Jurkat cells using Peropsin Polyclonal Antibody

**Storage**

Store at +4°C after thawing. Aliquot store at -20°C or -80°C. Avoid repeated freeze / thaw cycles.

**Clonality**