

Anti-OR2K2 antibody



Catalog Number: 176174

Product name

Anti-OR2K2 antibody

Specificity

Human

Antibody description

Rabbit polyclonal antibody to OR2K2

Preparation

This antigen of this antibody was the antiserum was produced against synthesized peptide derived from human or2k2. aa range:241-290

Formulation

Liquid, Liquid in PBS containing 50% glycerol, 0.5% BSA and 0.02% sodium azide.

Storage

Store at +4°C after thawing. Aliquot store at -20°C or -80°C. Avoid repeated freeze / thaw cycles.

Clonality

Polyclonal

Ig Type

IgG

Applications

WB, IF

Dilutions

WB: 1:500-1:2000

IF: 1:100-1:500

Validations

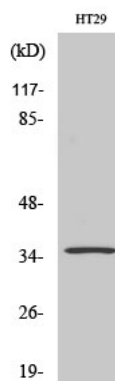


Fig1.: Western Blot analysis of various cells using Olfactory receptor 2K2 Polyclonal Antibody