

Anti-NXPH4 antibody



Catalog Number: 176122

Product name

Polyclonal

Anti-NXPH4 antibody

Ig Type

Specificity

Rabbit IgG

Human, Rat

Applications

Antibody description

WB, IHC-P

Rabbit polyclonal antibody to NXPH4

Dilutions

Preparation

WB: 1:500-1:2000

This antigen of this antibody was the antiserum was produced against synthesized peptide derived from human nxph4. aa range:216-265

IHC-P: 1:100-1:300

Formulation

Liquid, Liquid in PBS containing 50% glycerol, 0.5% BSA and 0.02% sodium azide.

Validations

Storage

Store at +4°C after thawing. Aliquot store at -20°C or -80°C. Avoid repeated freeze / thaw cycles.

Clonality

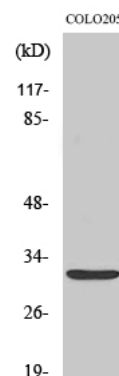


Fig1:: Western Blot analysis of various cells using Neurexophilin-4 Polyclonal Antibody