

# Anti-LBP antibody



Catalog Number: 176052

## Product name

Anti-LBP antibody

## Specificity

Human, Mouse, Rat

## Antibody description

Rabbit polyclonal antibody to LBP

## Preparation

This antigen of this antibody was the antiserum was produced against synthesized peptide derived from human lbp. aa range:221-270

## Formulation

Liquid, Liquid in PBS containing 50% glycerol, 0.5% BSA and 0.02% sodium azide.

## Storage

Store at +4°C after thawing. Aliquot store at -20°C or -80°C. Avoid repeated freeze / thaw cycles.

## Clonality

Polyclonal

## Ig Type

Rabbit IgG

## Applications

WB

## Dilutions

WB: 1:500-1:2000

## Validations

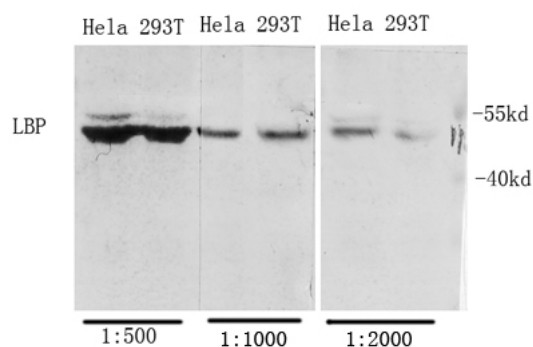


Fig1.; Western Blot analysis of various cells using Antibody diluted at 1:1000. Secondary antibody [catalog#: HA1001) was diluted at 1:20000 cells nucleus extracted by Minute TM Cytoplasmic and Nuclear Fractionation kit (SC-003, Inventbiotech, MN, USA).