

Anti-DNA2 antibody



Catalog Number: 175782

Product name

Anti-DNA2 antibody

Specificity

Human, Mouse, Rat

Antibody description

Rabbit polyclonal antibody to DNA2

Preparation

This antigen of this antibody was synthetic peptide within human dna2 aa 960-1000.

Formulation

Liquid, 1*TBS (pH7.4), 0.2% BSA, 50% Glycerol.
Preservative: 0.05% Sodium Azide.

Storage

Store at +4°C after thawing. Aliquot store at -20°C. Avoid repeated freeze / thaw cycles.

Clonality

Polyclonal

Ig Type

Rabbit IgG

Applications

WB, IHC-P, FC

Dilutions

WB: 1:500-1:1,000

IHC-P: 1:50-1:200

FC: 1:50-1:100

Validations

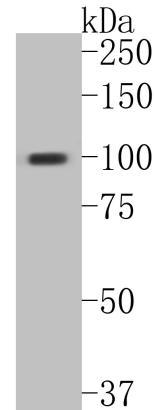


Fig1:: Western blot analysis of DNA2 on human stomach tissue lysates. Proteins were transferred to a PVDF membrane and blocked with 5% BSA in PBS for 1 hour at room temperature. The primary antibody (1/500) was used in 5% BSA at room temperature for 2 hours. Goat Anti-Rabbit IgG - HRP Secondary Antibody (HA1001) at 1:5,000 dilution was used for 1 hour at room temperature.

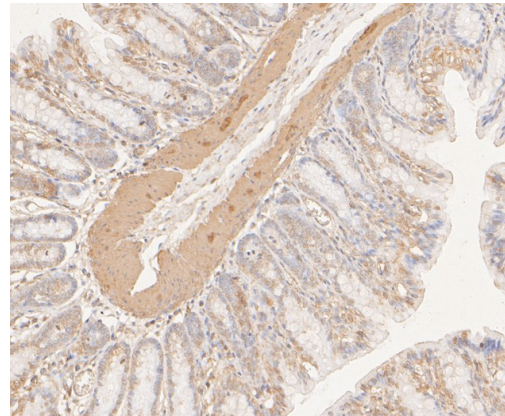


Fig2:: Immunohistochemical analysis of paraffin-embedded rat large intestine tissue using anti-DNA2 antibody. The section was pre-treated using heat mediated antigen retrieval with sodium citrate buffer (pH 6.0) for 20 minutes. The tissues were blocked in 5% BSA for 30 minutes at room temperature, washed with ddH₂O and PBS, and then probed with the primary antibody (1/400) for 30 minutes at room temperature. The detection was performed using an HRP conjugated compact polymer system. DAB was used as the chromogen. Tissues were counterstained with hematoxylin and mounted with DPX.

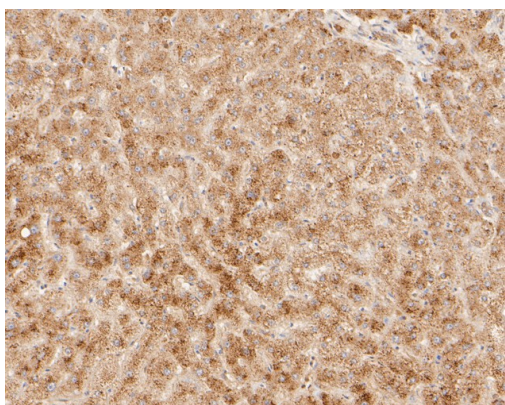


Fig3:; Immunohistochemical analysis of paraffin-embedded human liver tissue using anti-DNA2 antibody. The section was pre-treated using heat mediated antigen retrieval with sodium citrate buffer (pH 6.0) for 20 minutes. The tissues were blocked in 5% BSA for 30 minutes at room temperature, washed with ddH₂O and PBS, and then probed with the primary antibody (1/400) for 30 minutes at room temperature. The detection was performed using an HRP conjugated compact polymer system. DAB was used as the chromogen. Tissues were counterstained with hematoxylin and mounted with DPX.

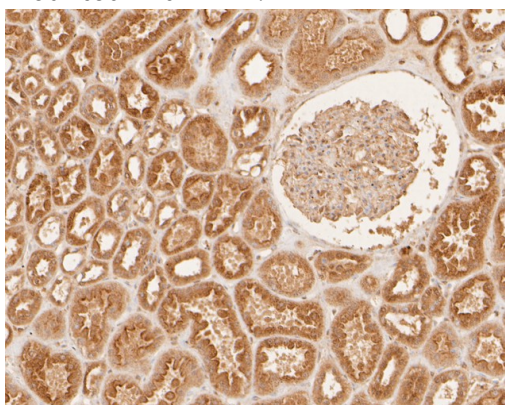


Fig4:; Immunohistochemical analysis of paraffin-embedded human kidney tissue using anti-DNA2 antibody. The section was pre-treated using heat mediated antigen retrieval with sodium citrate buffer (pH 6.0) for 20 minutes. The tissues were blocked in 5% BSA for 30 minutes at room temperature, washed with ddH₂O and PBS, and then probed with the primary antibody (1/400) for 30 minutes at room temperature. The detection was performed using an HRP conjugated compact polymer system. DAB was used as the chromogen.

Tissues were counterstained with hematoxylin and mounted with DPX.

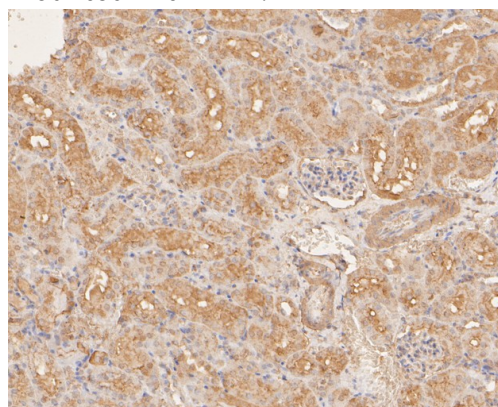


Fig5:; Immunohistochemical analysis of paraffin-embedded mouse kidney tissue using anti-DNA2 antibody. The section was pre-treated using heat mediated antigen retrieval with sodium citrate buffer (pH 6.0) for 20 minutes. The tissues were blocked in 5% BSA for 30 minutes at room temperature, washed with ddH₂O and PBS, and then probed with the primary antibody (1/400) for 30 minutes at room temperature. The detection was performed using an HRP conjugated compact polymer system. DAB was used as the chromogen. Tissues were counterstained with hematoxylin and mounted with DPX.

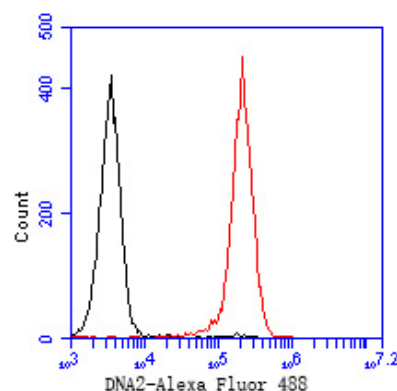


Fig6:; Flow cytometric analysis of DNA2 was done on HL-60 cells. The cells were fixed, permeabilized and stained with the primary antibody (1/50) (red). After incubation of the primary antibody at room temperature for an hour, the cells were stained with a Alexa Fluor 488-conjugated Goat anti-Rabbit IgG Secondary antibody at 1/1000 dilution for 30 minutes. Unlabelled sample was used as a control

Anti-DNA2 antibody



Catalog Number: 175782

(cells without incubation with primary antibody; black).