

Anti-CH25H antibody



Catalog Number: 175775

Product name

Anti-CH25H antibody

Specificity

Human

Antibody description

Rabbit polyclonal antibody to CH25H

Preparation

This antigen of this antibody was synthetic peptide within human ch25h aa 181-272.

Formulation

Liquid, 1*TBS (pH7.4), 1%BSA, 50%Glycerol.
Preservative: 0.05% Sodium Azide.

Storage

Store at +4°C after thawing. Aliquot store at -20°C. Avoid repeated freeze / thaw cycles.

Clonality

Polyclonal

Ig Type

Rabbit IgG

Applications

IHC-P, ICC/IF

Dilutions

IHC-P:1:100-500

ICC/IF:1:100-500

Validations

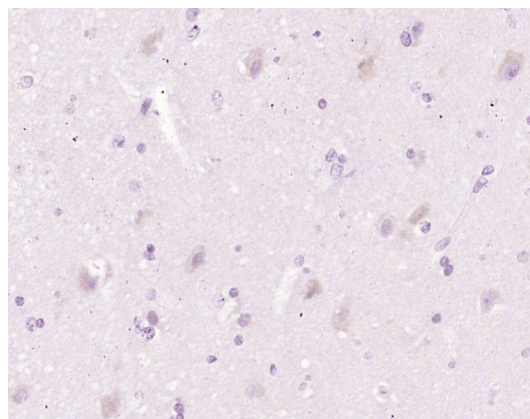


Fig1:: Immunohistochemical analysis of paraffin-embedded human brain glioma using anti-CH25H antibody. The section was pre-treated using heat mediated antigen retrieval with Tris-EDTA buffer (pH 8.0-8.4) for 20 minutes. The tissues were blocked in 5% BSA for 30 minutes at room temperature, washed with ddH₂O and PBS, and then probed with the primary antibody (1/100) for 30 minutes at room temperature. The detection was performed using an HRP conjugated compact polymer system. DAB was used as the chromogen. Tissues were counterstained with hematoxylin and mounted with DPX.