

Anti-VLDLR antibody



Catalog Number: 175747

Product name

Anti-VLDLR antibody

Specificity

Human, Mouse, Rat, Chicken, Dog, Pig, Cow, Rabbit

Antibody description

Rabbit polyclonal antibody to VLDLR

Preparation

This antigen of this antibody was klh conjugated synthetic peptide derived from human vldl receptor 551-650/873

Formulation

Liquid, 0.01M TBS(pH7.4) with 1% BSA, 0.03% Proclin300 and 50% Glycerol.

Storage

Store at -20°C for one year. Avoid repeated freeze/thaw cycles.

Clonality

Polyclonal

Ig Type

IgG

Applications

WB

Dilutions

WB:1:500-2000

Validations

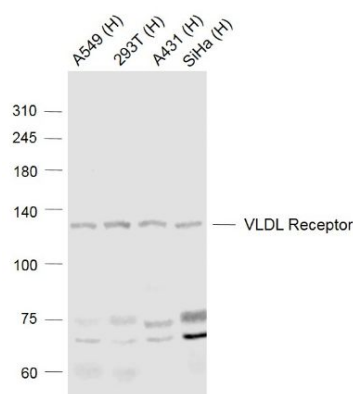


Fig1.; Sample.; Lane 1: A549 (Human) Cell Lysate at 30 ug; Lane 2: 293T (Human) Cell Lysate at 30 ug; Lane 3: A431 (Human) Cell Lysate at 30 ug; Lane 4: SiHa (Human) Cell Lysate at 30 ug; Primary: Anti-VLDL Receptor at 1/1000 dilution; Secondary: Goat Anti-Rabbit IgG at 1/20000 dilution; Predicted band size: 120 kD; Observed band size: 120 kD