

Anti-OSBPL1A antibody



Catalog Number: 175623

Product name

Anti-OSBPL1A antibody

Specificity

Human, Mouse, Rat, Dog, Pig, Cow, Sheep

Antibody description

Rabbit polyclonal antibody to OSBPL1A

Preparation

This antigen of this antibody was klh conjugated synthetic peptide derived from human orp1 851-950/950

Formulation

Liquid, 0.01M TBS(pH7.4) with 1% BSA, 0.03% Proclin300 and 50% Glycerol.

Storage

Store at -20°C for one year. Avoid repeated freeze/thaw cycles. The lyophilized antibody is stable at room temperature for at least one month and for greater than a year when kept at -20°C. When reconstituted in sterile pH 7.4 0.01M PBS or diluent of antibody the antibody is stable for at least two weeks at 2-4°C.

Clonality

Polyclonal

Ig Type

IgG

Applications

WB

Dilutions

WB:1:500-2000

Validations

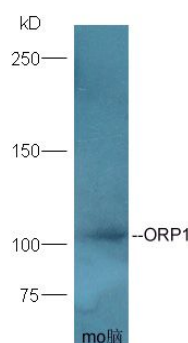


Fig1: Protein: brain(mouse) lystes at 40ug;; Primary: Anti-ORP1 at 1:300;; Secondary: HRP conjugated Goat-Anti-Rabbit IgG(bse-0295G-HRP) at 1: 5000;; ECL excited the fluorescence;; Predicted band size :108 kD; Observed band size :108 kD