

General Information

Product name:

Anti-IL22 antibody

Immunogen:

Applications:

WB, IHC-P, FC

Specificity:

Human, Mouse, Rat, Dog

Antibody description:

Rabbit polyclonal antibody to IL22

Properties

Preparation:

This antigen of this antibody was klh conjugated synthetic peptide derived from human il-22 35-179/179

Formulation:

Liquid, 0.01M TBS(pH7.4) with 1% BSA, 0.03% Proclin300 and 50% Glycerol.

Storage:

Store at -20°C for one year. Avoid repeated freeze/thaw cycles.

Clonality:

Polyclonal

Ig Type: IgG

Applications

WB: 1:500-2000

IHC-P: 1:400-800

FC: 1µg /test

Validations

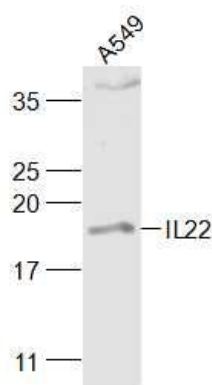


Fig1: Sample:; A549 (Human) Cell Lysate at 30 ug; Primary: Anti-IL22 (ER1911-31) at 1/1000 dilution; Secondary: IRDye800CW Goat Anti-Rabbit IgG at 1/20000 dilution; Predicted band size: 17 kD; Observed band size: 19 kD

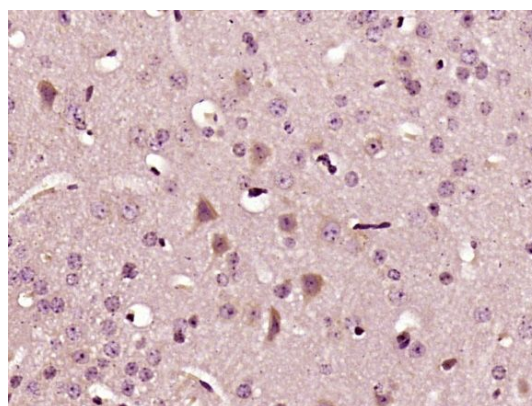


Fig2: Paraformaldehyde-fixed, paraffin embedded (Mouse brain); Antigen retrieval by boiling in sodium citrate buffer (pH6.0) for 15min; Block endogenous peroxidase by 3% hydrogen peroxide for 20 minutes; Blocking buffer (normal goat serum) at 37°C for 30min; Antibody incubation with (IL22) Polyclonal Antibody, Unconjugated (ER1911-31) at 1:400 overnight at 4°C, followed by a conjugated secondary antibody (sp-0023) for 20 minutes and DAB staining.

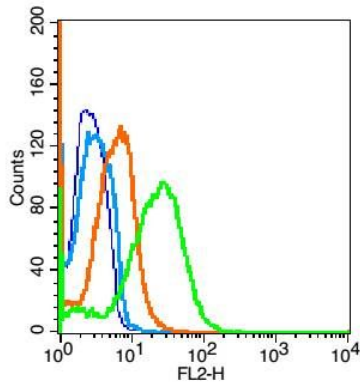


Fig3: Blank control(blue): Mouse liver cells(fixed with 2% paraformaldehyde (10 min) , then permeabilized with 90% ice-cold methanol for 30 min on ice).; Primary Antibody: Rabbit Anti-IL22 antibody (ER1911-31), Dilution: 1 μ g in 100 μ L 1X PBS containing 0.5% BSA;; Isotype Control Antibody: Rabbit IgG (orange) ,used under the same conditions.; Secondary Antibody: Goat anti-rabbit IgG-PE (white blue), Dilution: 1:200 in 1 X PBS containing 0.5% BSA.