

# Anti-Xaf1 antibody

Catalog Number: 175425

## Product name

Anti-Xaf1 antibody

## Specificity

Mouse, Rat

## Antibody description

Rabbit polyclonal antibody to Xaf1

## Preparation

This antigen of this antibody was klh conjugated synthetic peptide derived from mouse xaf1 151-250/273

## Formulation

Liquid, 0.01M TBS(pH7.4) with 1% BSA, 0.03% Proclin300 and 50% Glycerol.

## Storage

Store at -20°C for one year. Avoid repeated freeze/thaw cycles. The lyophilized antibody is stable at room temperature for at least one month and for greater than a year when kept at -20°C. When reconstituted in sterile pH 7.4 0.01M PBS or diluent of antibody the antibody is stable for at least two weeks at 2-4°C.

## Clonality

Polyclonal

## Ig Type

IgG

## Applications

WB, IHC-P

## Dilutions

WB:1:500-2000

IHC-P:1:400-800

## Validations

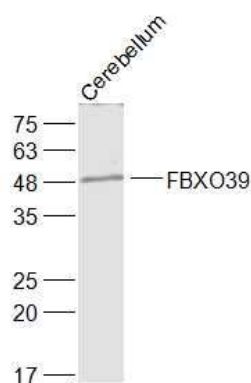


Fig1: Sample:; Cerebellum(Rat) Lysate at 40 ug; Primary: Anti-FBXO39 at 1/1000 dilution; Secondary: IRDye800CW Goat Anti-Rabbit IgG at 1/20000 dilution; Predicted band size: 31 kD; Observed band size: 50 kD