

General Information

Product name:

Anti-CRB2 antibody

Immunogen:

Applications:

WB, IHC-P

Specificity:

Human, Mouse, Rat

Antibody description:

Rabbit polyclonal antibody to CRB2

Properties

Preparation:

This antigen of this antibody was klh conjugated synthetic peptide derived from human crb2 701-800/1285

Formulation:

Liquid, 0.01M TBS(pH7.4) with 1% BSA, 0.03% Proclin300 and 50% Glycerol.

Storage:

Store at -20°C for one year. Avoid repeated freeze/thaw cycles. The lyophilized antibody is stable at room temperature for at least one month and for greater than a year when kept at -20°C. When reconstituted in sterile pH 7.4 0.01M PBS or diluent of antibody the antibody is stable for at least two weeks at 2-4°C.

Clonality:

Polyclonal

Ig Type: IgG

Applications

WB:1:500-2000

IHC-P:1:400-800

Validations

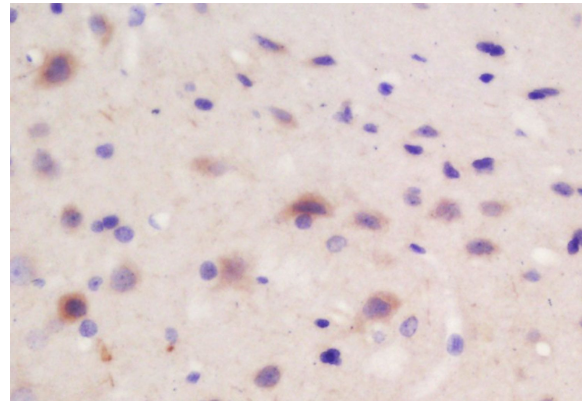


Fig1: Tissue/cell: rat brain tissue; 4% Paraformaldehyde-fixed and paraffin-embedded;; Antigen retrieval: citrate buffer (0.01M, pH 6.0), Boiling bathing for 15min; Block endogenous peroxidase by 3% Hydrogen peroxide for 30min; Blocking buffer (normal goat serum,C-0005) at 37°C for 20 min;; Incubation: Anti-CRB2 Polyclonal Antibody, Unconjugated 1:200, overnight at 4°C, followed by conjugation to the secondary antibody(SP-0023) and DAB(C-0010) staining

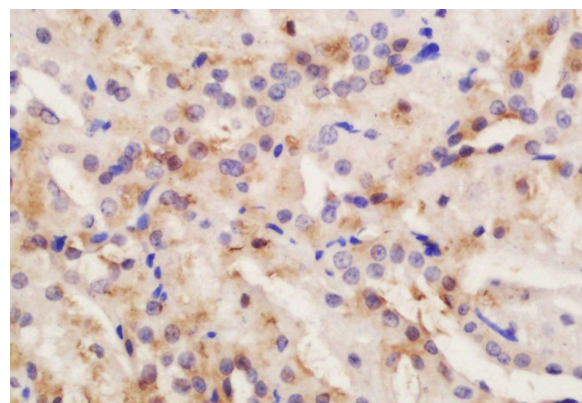


Fig2: Tissue/cell: rat kidney tissue; 4% Paraformaldehyde-fixed and paraffin-embedded;; Antigen retrieval: citrate buffer (0.01M, pH 6.0), Boiling bathing for 15min; Block endogenous peroxidase by 3% Hydrogen peroxide for 30min; Blocking buffer (normal goat serum,C-0005) at

Anti-CRB2 antibody

Catalog Number: 175343

37°C for 20 min;; Incubation: Anti-CRB2 Polyclonal Antibody, Unconjugated 1:200, overnight at 4°C, followed by conjugation to the secondary antibody(SP-0023) and DAB(C-0010) staining

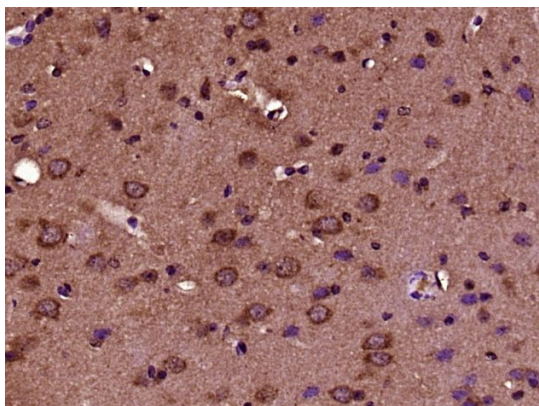


Fig3: Paraformaldehyde-fixed, paraffin embedded (Mouse brain); Antigen retrieval by boiling in sodium citrate buffer (pH6.0) for 15min; Block endogenous peroxidase by 3% hydrogen peroxide for 20 minutes; Blocking buffer (normal goat serum) at 37°C for 30min; Antibody incubation with (CRB2) Polyclonal Antibody, Unconjugated at 1:400 overnight at 4°C, followed by operating according to SP Kit(Rabbit) (sp-0023) instructions and DAB staining.

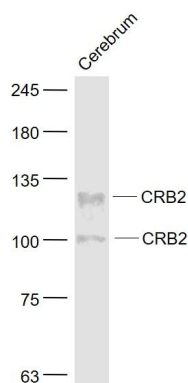


Fig4: Sample;; Cerebrum (Mouse) Lysate at 40 ug; Primary: Anti- CRB2 at 1/1000 dilution; Secondary: IRDye800CW Goat Anti-Rabbit IgG at 1/20000 dilution; Predicted band size: 100,123,131 kD; Observed band size: 100,131 kD

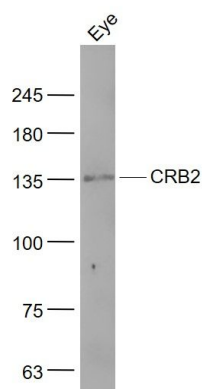


Fig5: Sample;; Eye(Rat) Lysate at 40 ug; Primary: Anti- CRB2 at 1/1000 dilution; Secondary: IRDye800CW Goat Anti-Rabbit IgG at 1/20000 dilution; Predicted band size: 100/123/131 kD; Observed band size: 135 kD