

# Anti-Clec5a antibody



Catalog Number: 175337

## Product name

Anti-Clec5a antibody

## Specificity

Human, Mouse, Rat, Pig, Cow, Horse, Rabbit

## Antibody description

Rabbit polyclonal antibody to Clec5a

## Preparation

This antigen of this antibody was klh conjugated synthetic peptide derived from mouse clec5a 101-190/190

## Formulation

Liquid, 0.01M TBS(pH7.4) with 1% BSA, 0.03% Proclin300 and 50% Glycerol.

## Storage

Store at -20°C for one year. Avoid repeated freeze/thaw cycles. The lyophilized antibody is stable at room temperature for at least one month and for greater than a year when kept at -20°C. When reconstituted in sterile pH 7.4 0.01M PBS or diluent of antibody the antibody is stable for at least two weeks at 2-4°C.

## Clonality

Polyclonal

## Ig Type

Rabbit IgG

## Applications

WB, IHC-P

## Dilutions

WB:1:500-2000

IHC-P:1:400-800

## Validations

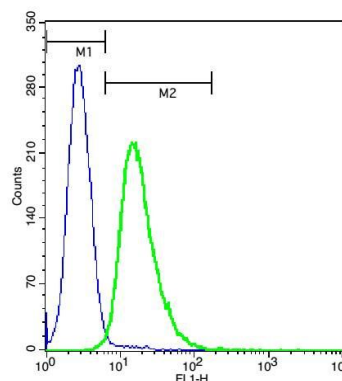
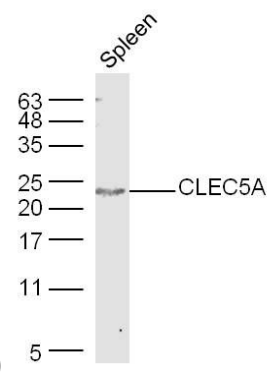


Fig1: Cell: U937.; Concentration: 1:100.; Incubation: 40 minutes, room temperature.; Host/Blank: U937 cells.; Flow cytometric analysis of Rabbit Anti-CLEC5A antibody (green) compared with control in the absence of primary antibody (blue) followed by U937 cells.; secondary antibody: Goat Anti-rabbit IgG/FITC antibody



(bs-0295G-FITC)

Fig2: Sample: Spleen (Mouse) Lysate at 40 ug; Primary: Anti-CLEC5A at 1/300 dilution; Secondary: IRDye800CW Goat Anti-Rabbit IgG at 1/20000 dilution; Predicted band size: 22 kD; Observed band size: 22 kD